

CFTC and ICE commitments of traders

Positions reported at close of business on January 4

JOHN KEMP
REUTERS
10 Jan 2022

CFTC and ICE commitments of traders

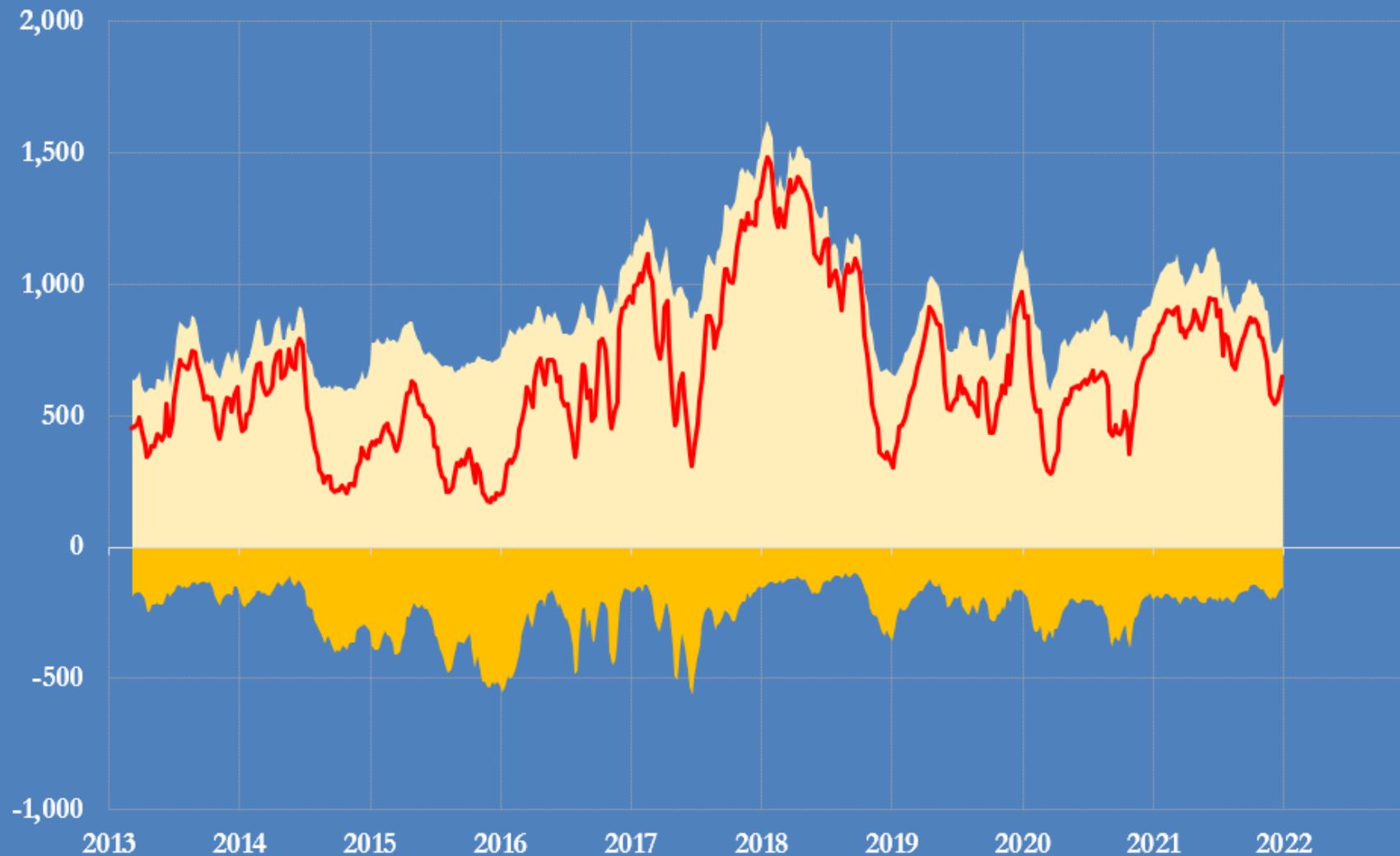
Week ending: 4 January 2022

	Total Long Positions	Total Short Positions	Net Position (Long-Short)		Δ Long Positions	Δ Short Positions	Δ Net position	Long/Short Positions Ratio	
	million bbl	million bbl	million bbl	percentile	million bbl	million bbl	million bbl	ratio	percentile
Total petroleum positions	801	155	646	0.55	+27	-5	+31	5.18	0.67
Crude oil	604	125	478	0.42	+9	-8	+17	4.82	0.56
All products	197	29	167	0.76	+18	+3	+15	6.68	0.76
Middle distillates	116	23	93	0.72	+11	+4	+7	5.01	0.78
WTI (NYMEX + ICE)	328	56	272	0.49	-3	-1	-2	5.85	0.64
Brent	276	69	207	0.39	+12	-7	+19	3.99	0.45
U.S. gasoline	81	6	75	0.78	+6	-1	+7	12.87	0.91
U.S. heating oil	36	16	20	0.65	+6	+2	+4	2.22	0.70
European gas oil	80	7	73	0.73	+5	+2	+3	11.30	0.78

Percentiles are for all weeks since 2013

Sources: CFTC and ICE Futures Europe
@JKempEnergy

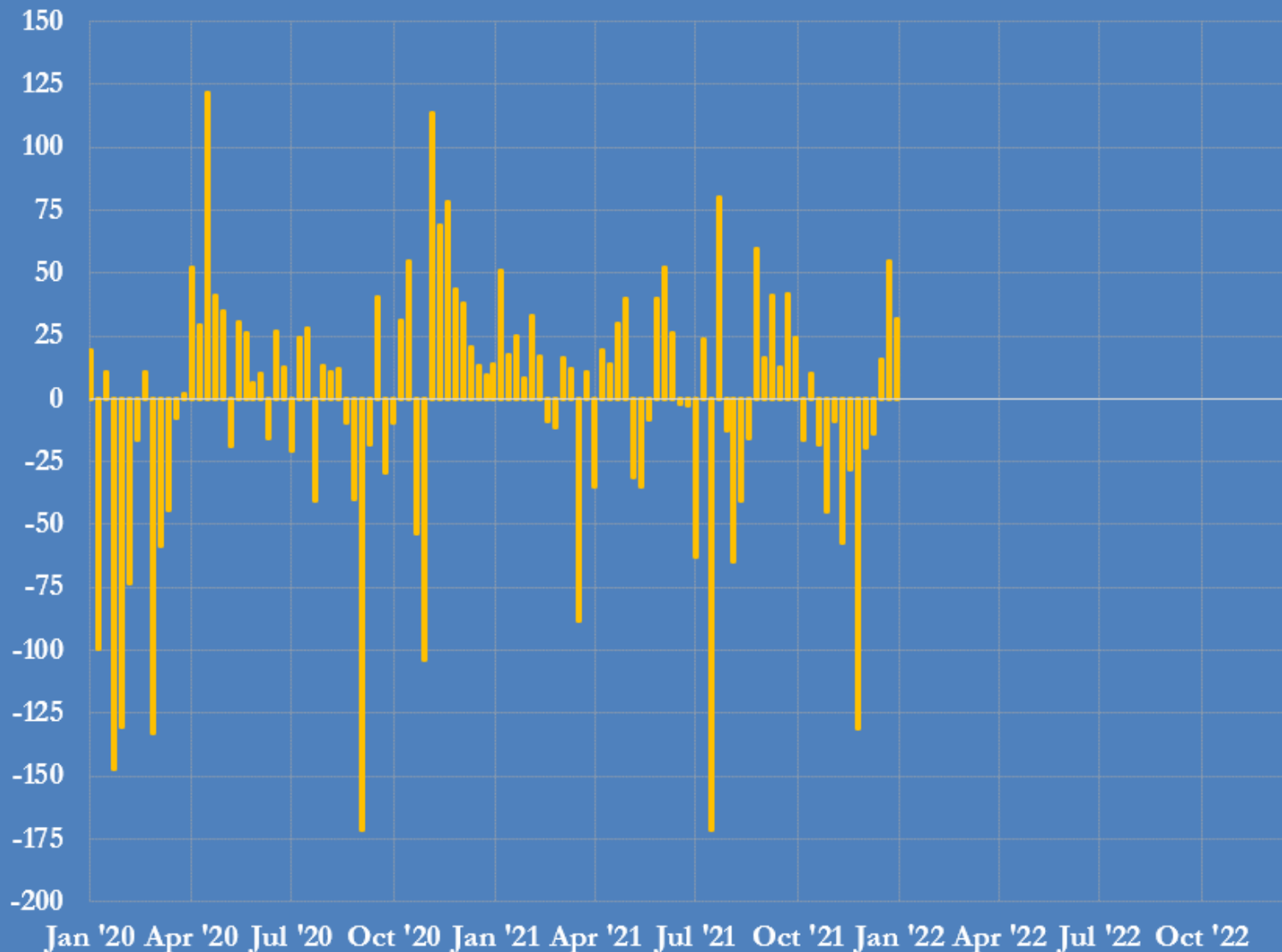
Money managers' total long and short positions in Brent, WTI, U.S. gasoline, U.S. heating oil and European gasoil (million bbl)



Long positions
Short positions
Net position

Sources: CFTC and ICE Futures Europe
@JKempEnergy

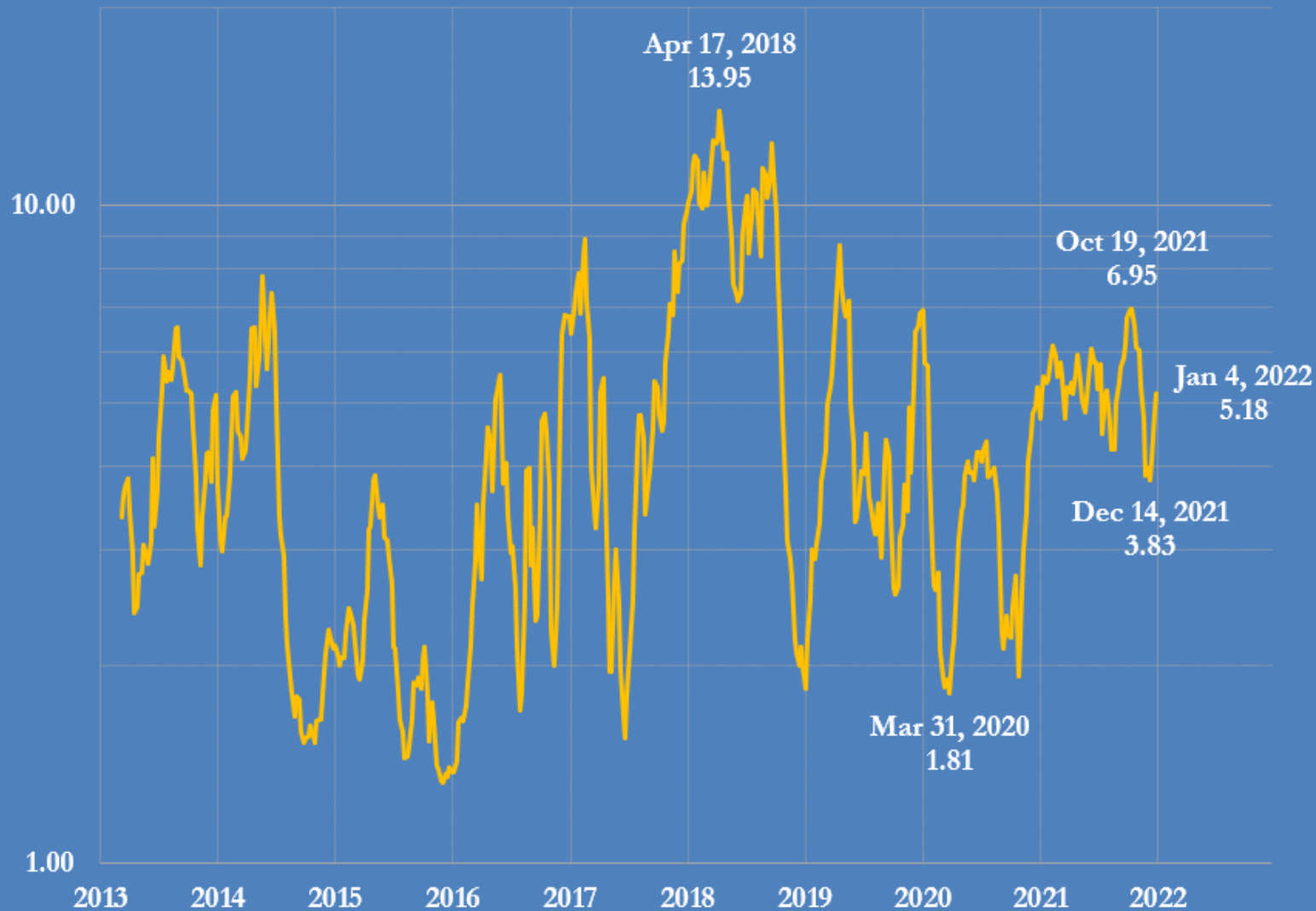
Money managers' weekly net position change in Brent, WTI, U.S. gasoline, U.S. heating oil and Euro gasoil (million bbl)



Sources: CFTC and ICE Futures Europe

@JKempEnergy

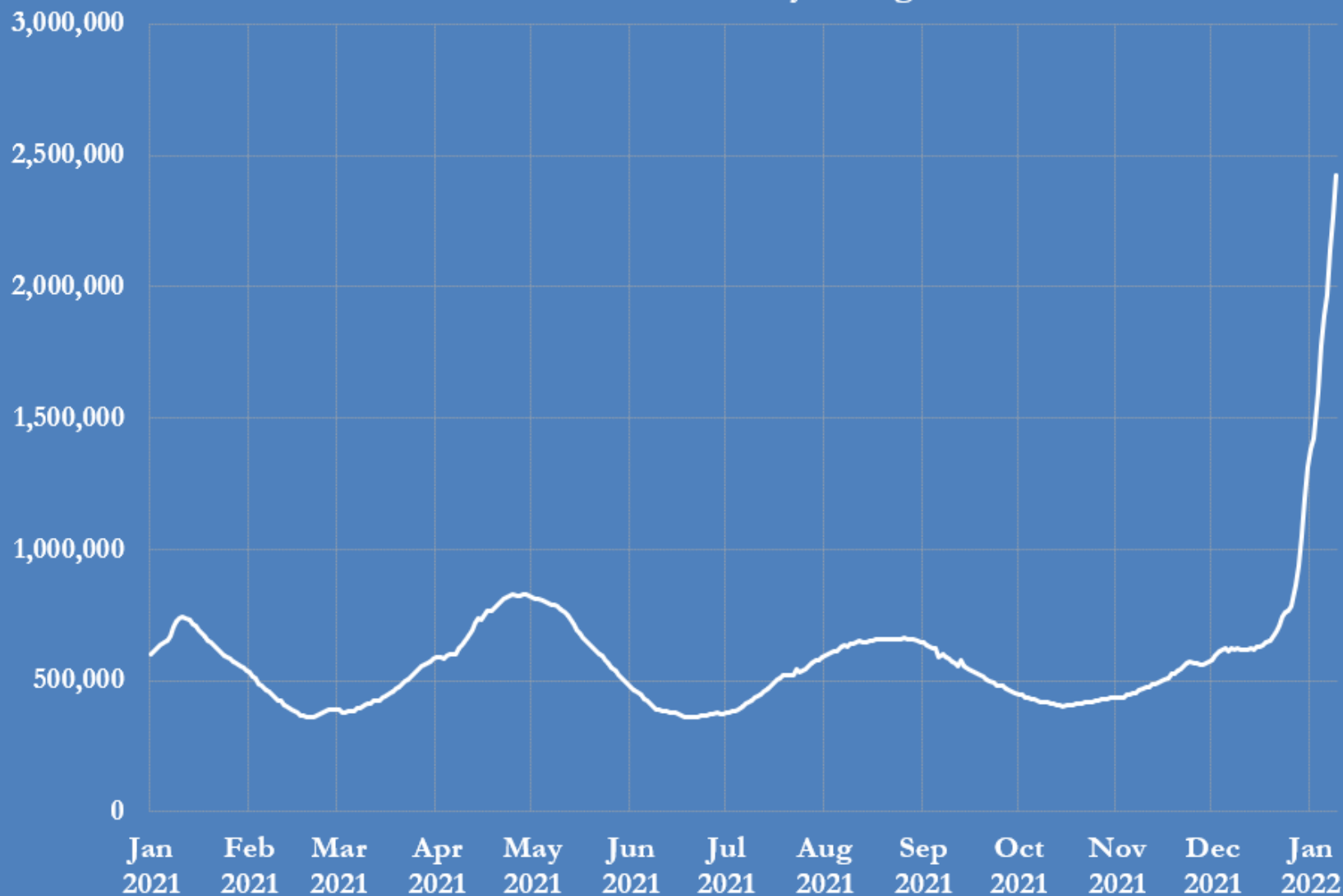
Ratio of money manager long to short positions in petroleum (Brent+WTI+gasoline+heating oil+ gasoil) (log-scale)



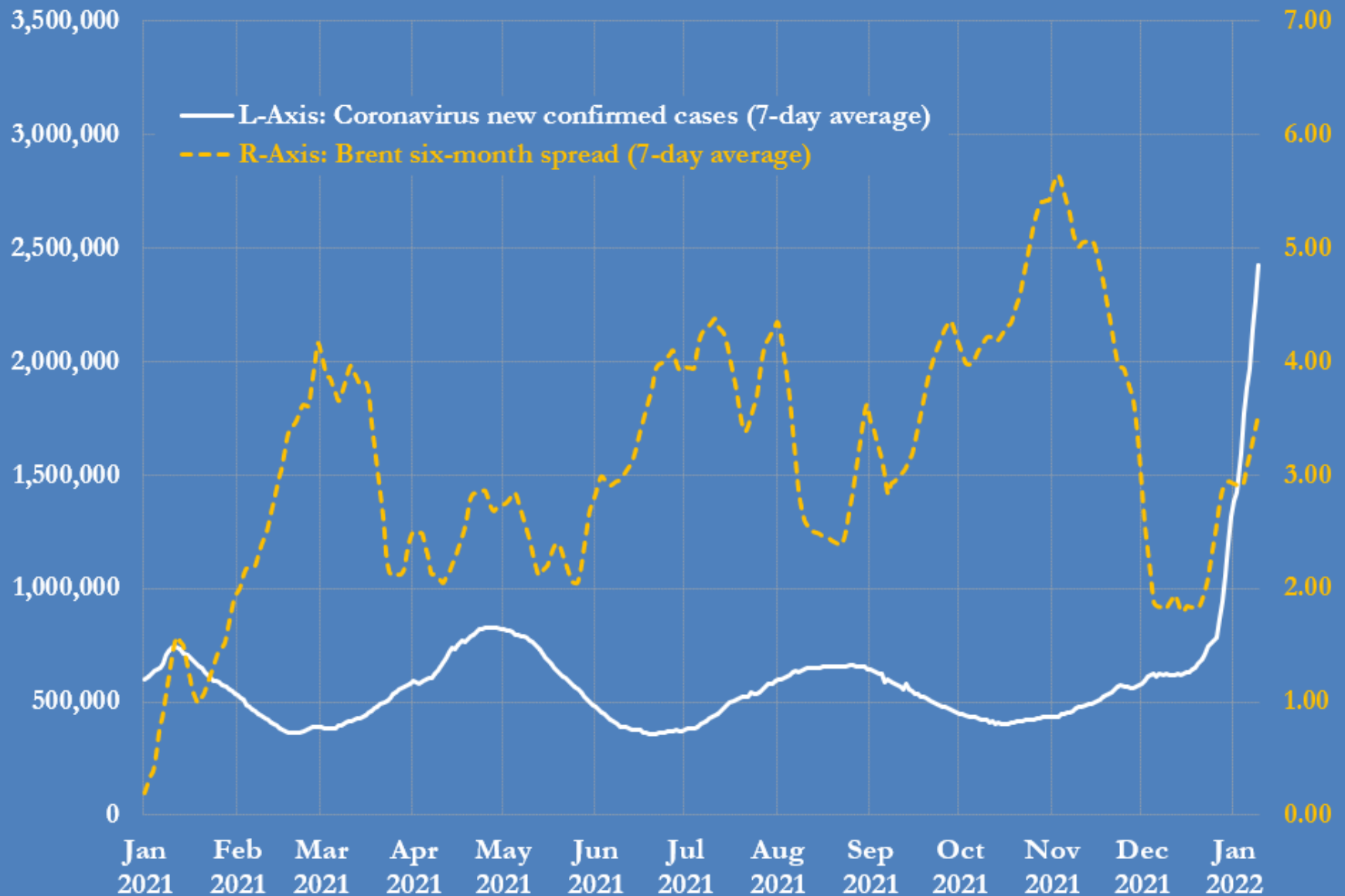
Sources: CFTC and ICE Futures Europe

@JKempEnergy

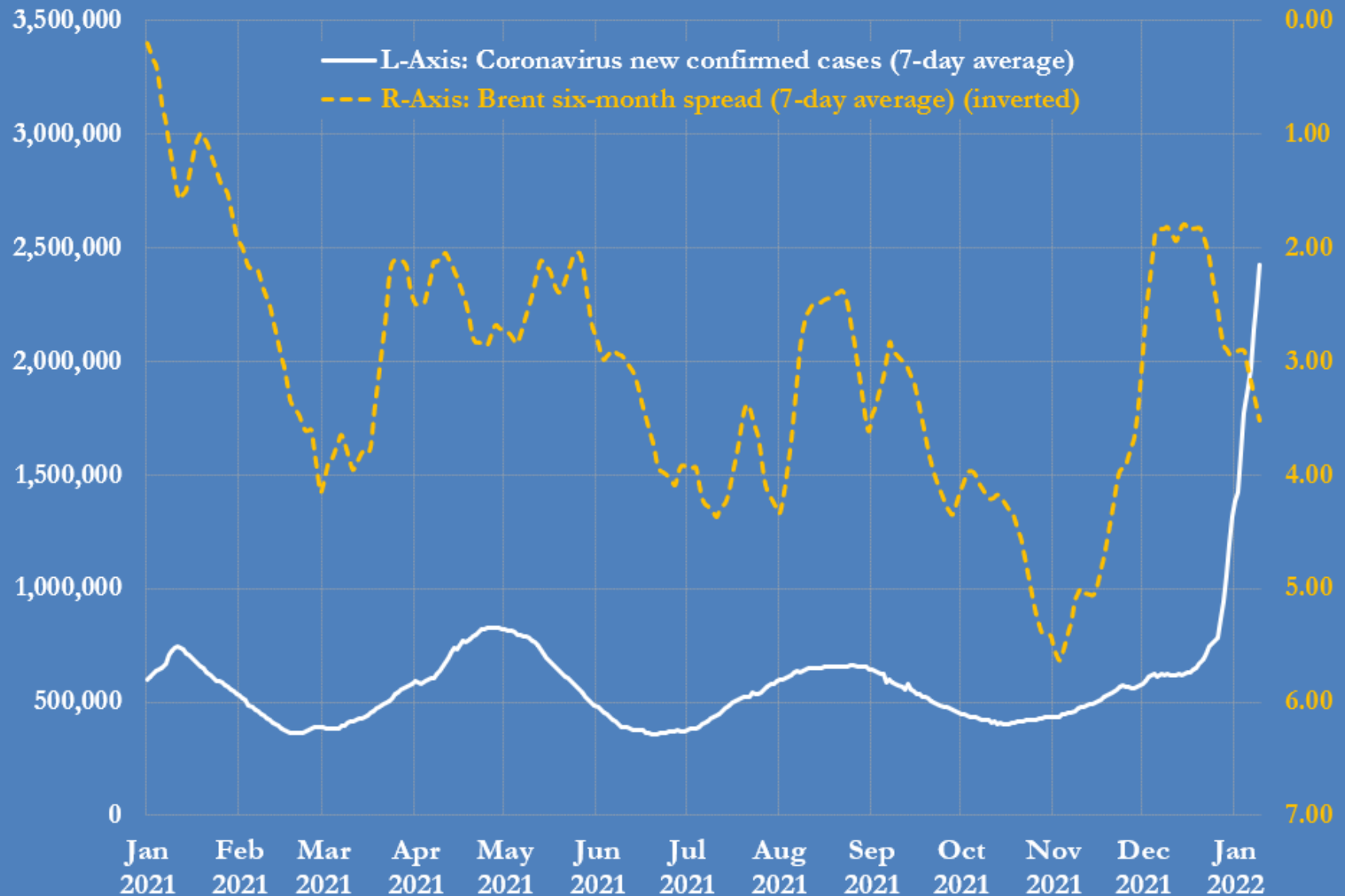
Coronavirus new confirmed cases, 2021-2022 worldwide, seven-day average



Coronavirus new confirmed cases and Brent calendar spread, 2021-2022



Coronavirus new confirmed cases and Brent calendar spread, 2021-2022



Sources: ICE Futures and Our World in Data

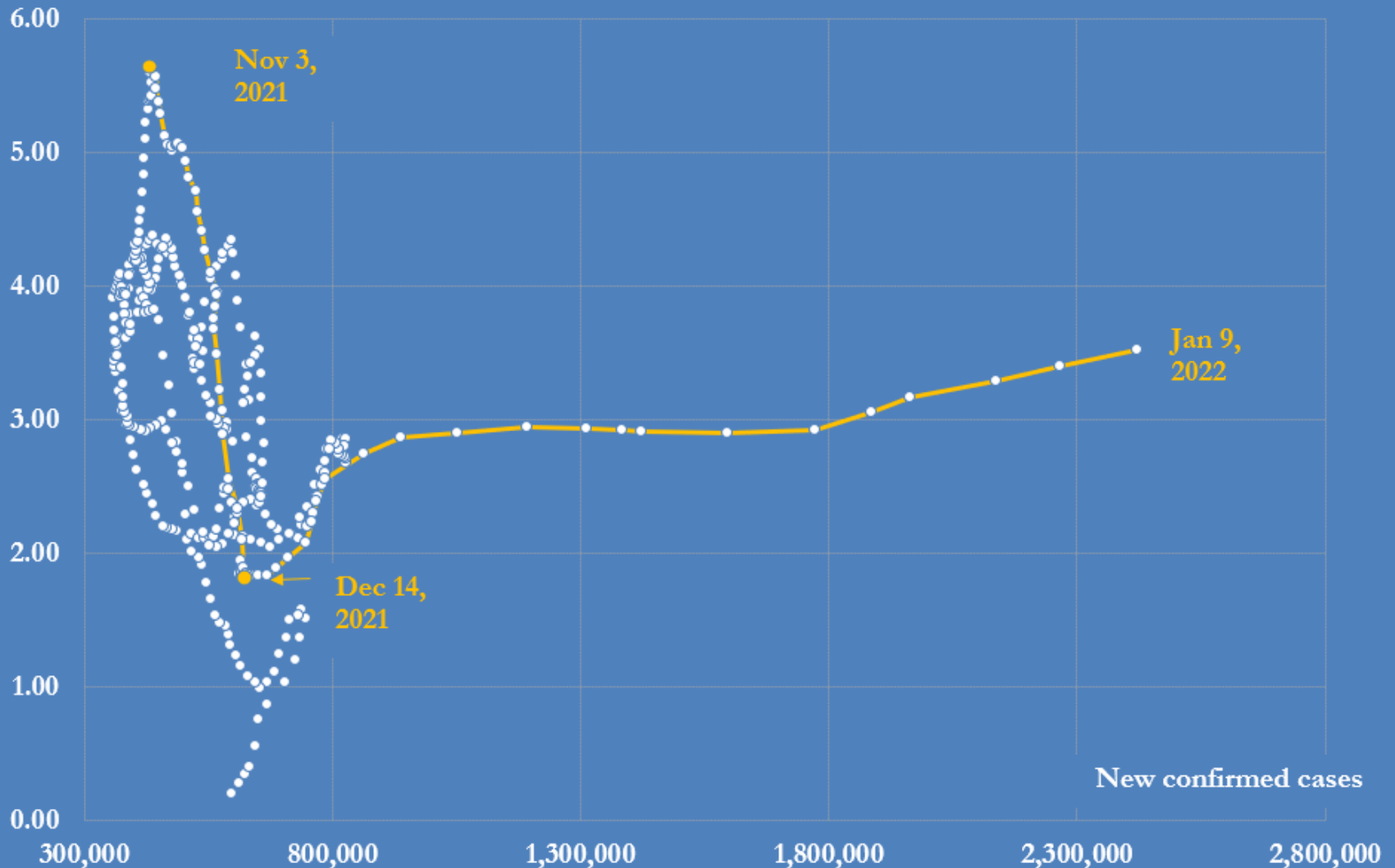
@JKempEnergy

Coronavirus cases and Brent spreads, 2021-2022

X-axis: seven-day average number of new confirmed cases

Y-axis: seven-day average Brent spread (M1-M7 U.S.\$ per barrel)

U.\$./bbl



Sources: ICE Futures and Our World in Data

@JKempEnergy