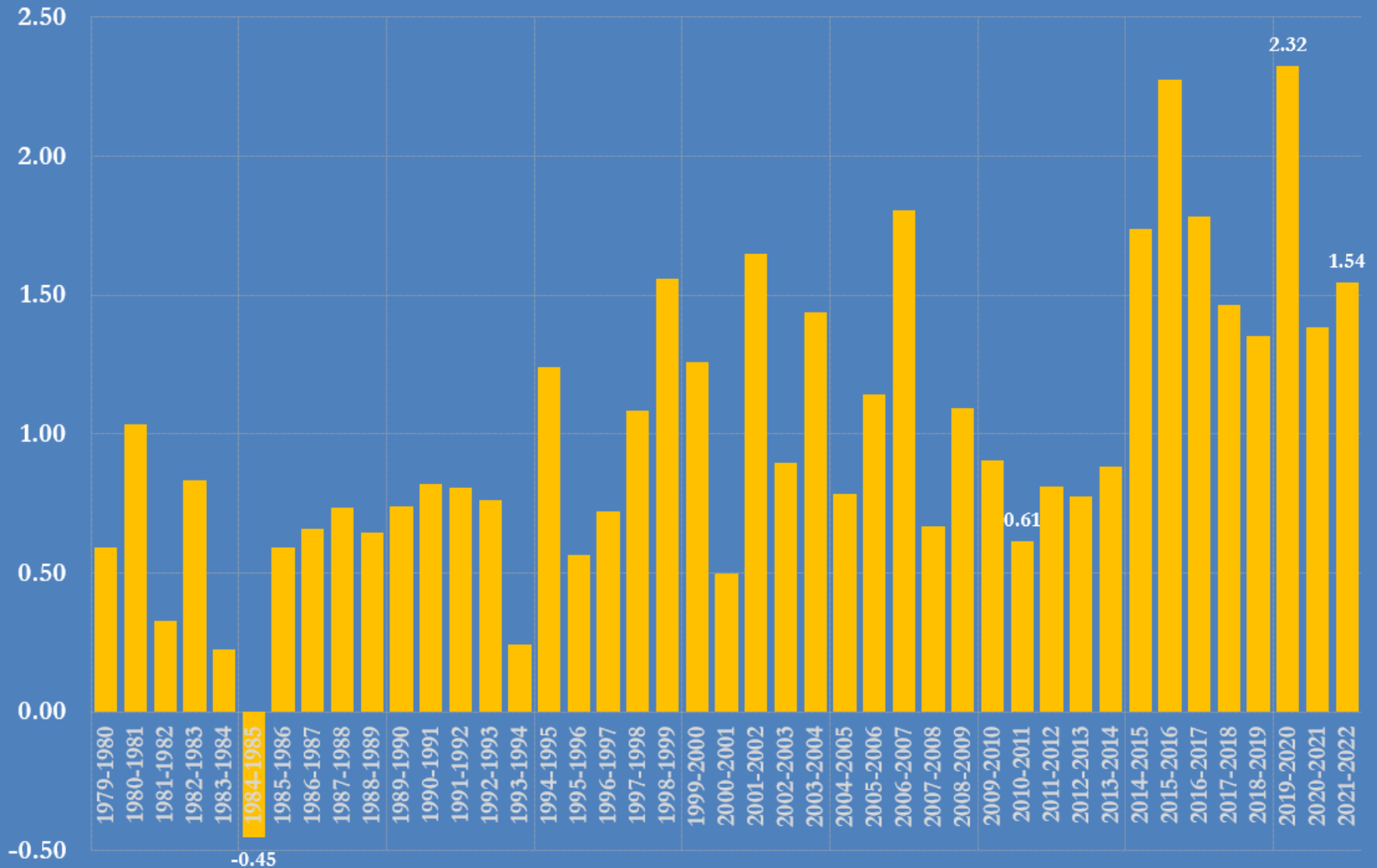


Northern hemisphere winter 2021/22

Selected indicators

JOHN KEMP
REUTERS
15 March 2022

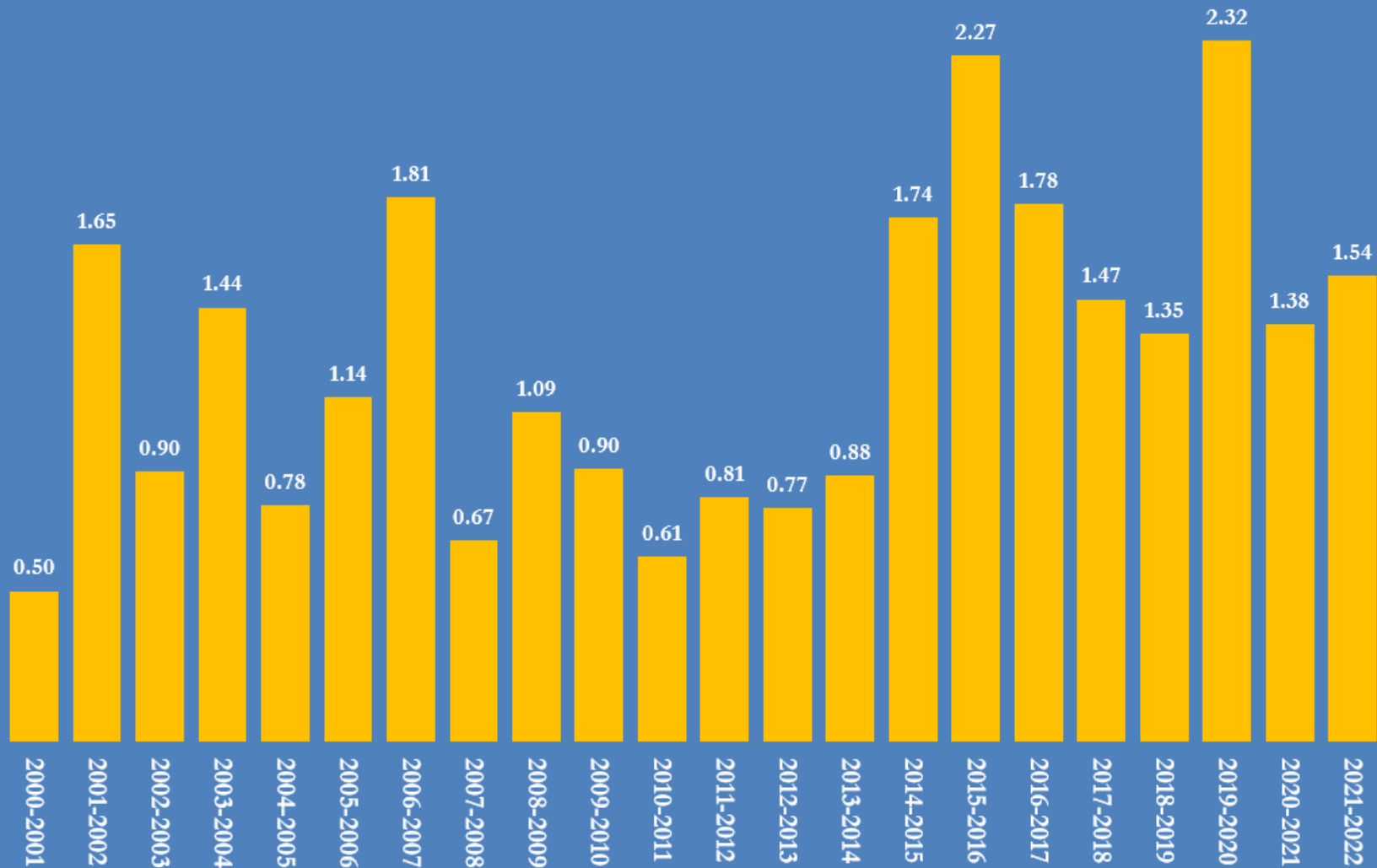
Northern Hemisphere average winter temperature, 1979/80 to 2021/22 °C, deviation from 1901-2000 baseline, land surface



Source: U.S. Climate Prediction Center

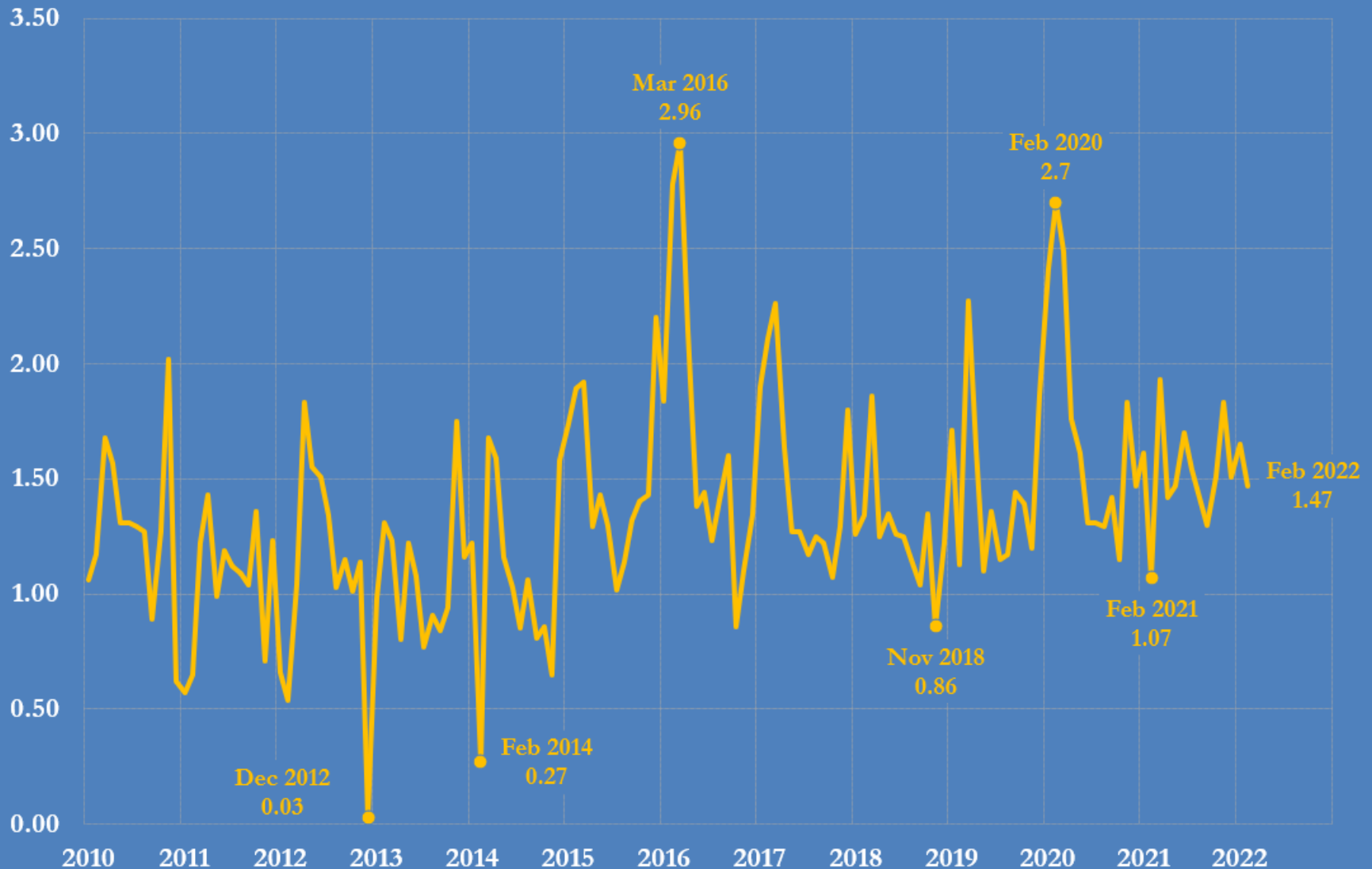
@JKempEnergy

Northern Hemisphere average winter temperature, 2000/01 to 2021/22
°C, deviation from 1901-2000 baseline, land surface



Northern Hemisphere average monthly temperature, 2010-2022

°C, deviation from the long-term average for 1901-2000, land surface

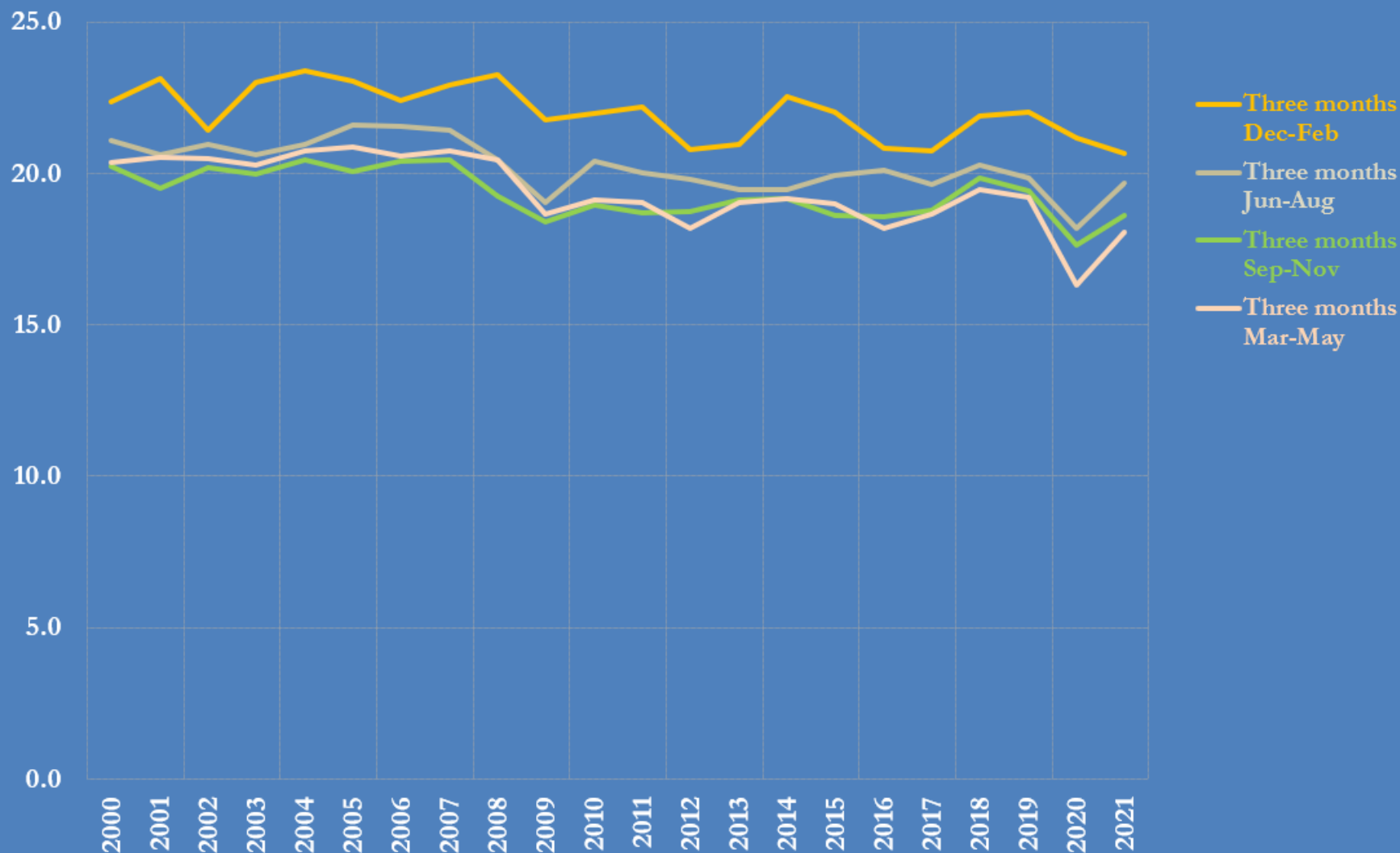


Source: U.S. Climate Prediction Center

@JKempEnergy

U.S. fossil energy consumption, 2000-2021

quadrillion British thermal units, quarterly ending on months shown

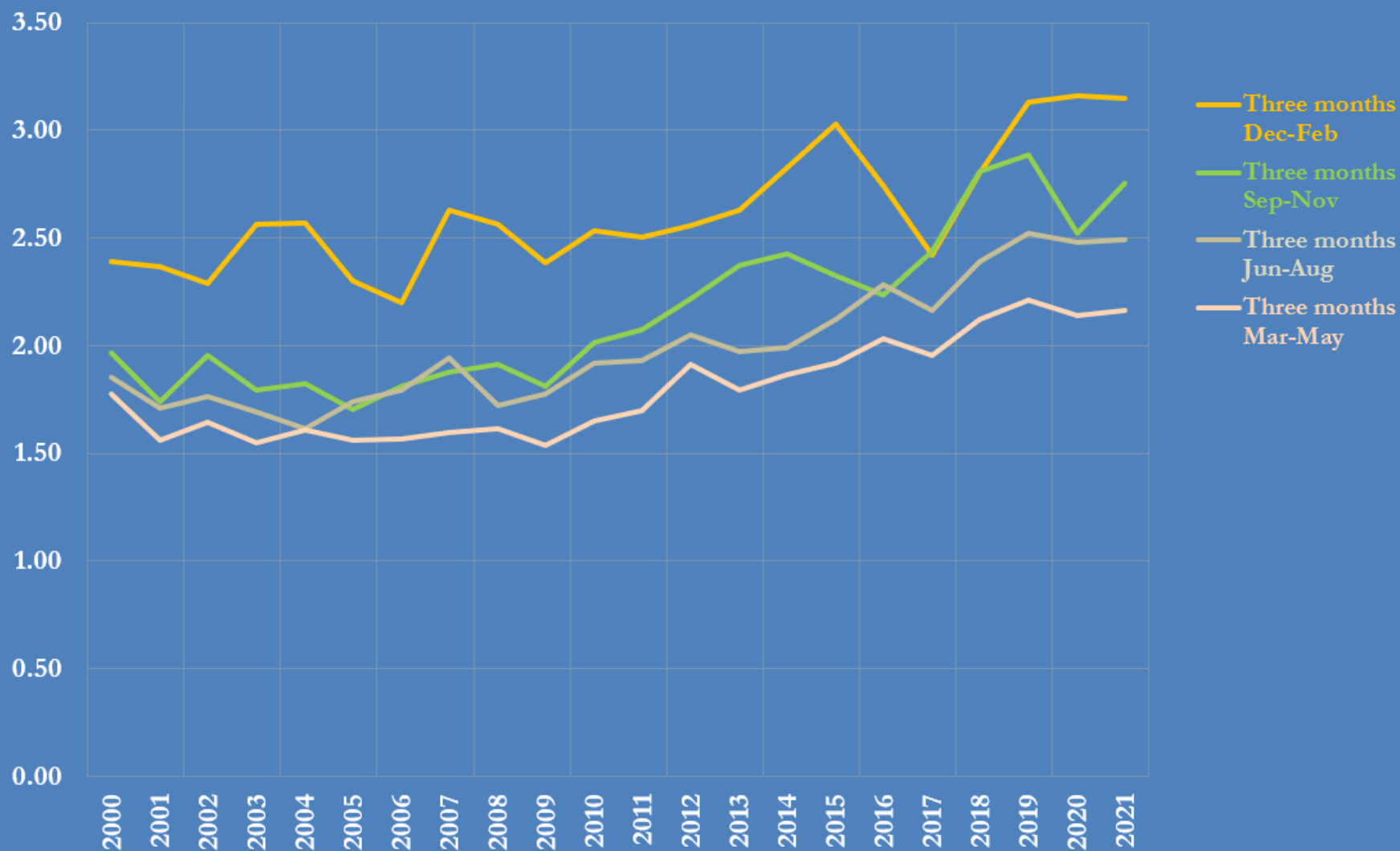


Source: U.S. Energy Information Administration, Monthly Energy Review

@JKempEnergy

U.S. natural gas consumption, 2000-2021

quadrillion British thermal units, quarterly ending on months shown



Source: U.S. Energy Information Administration, Monthly Energy Review

@JKempEnergy