

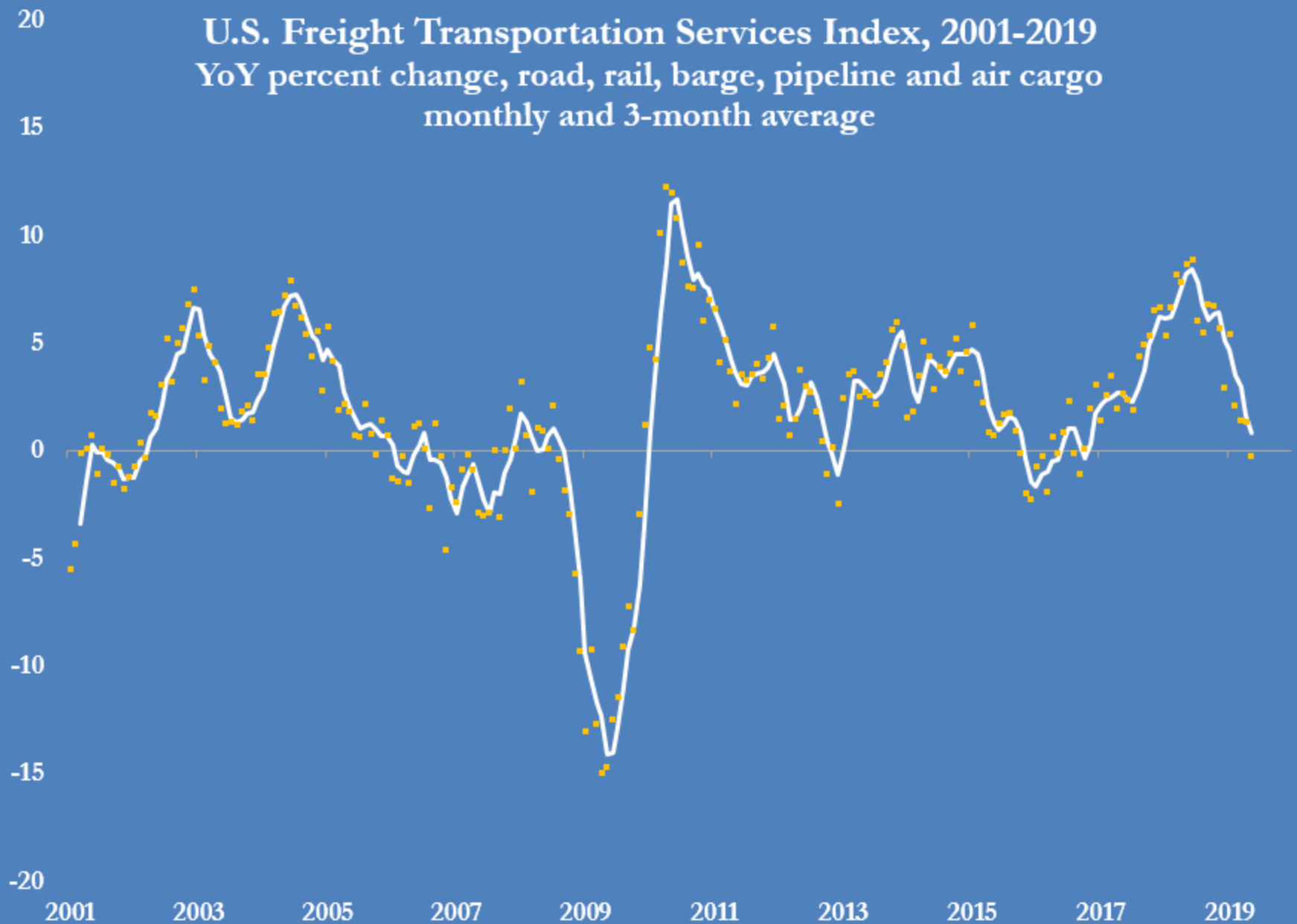
Global trade

Selected indicators

JOHN KEMP
REUTERS
12 July 2019

U.S. Freight Transportation Services Index, 2001-2019

YoY percent change, road, rail, barge, pipeline and air cargo
monthly and 3-month average

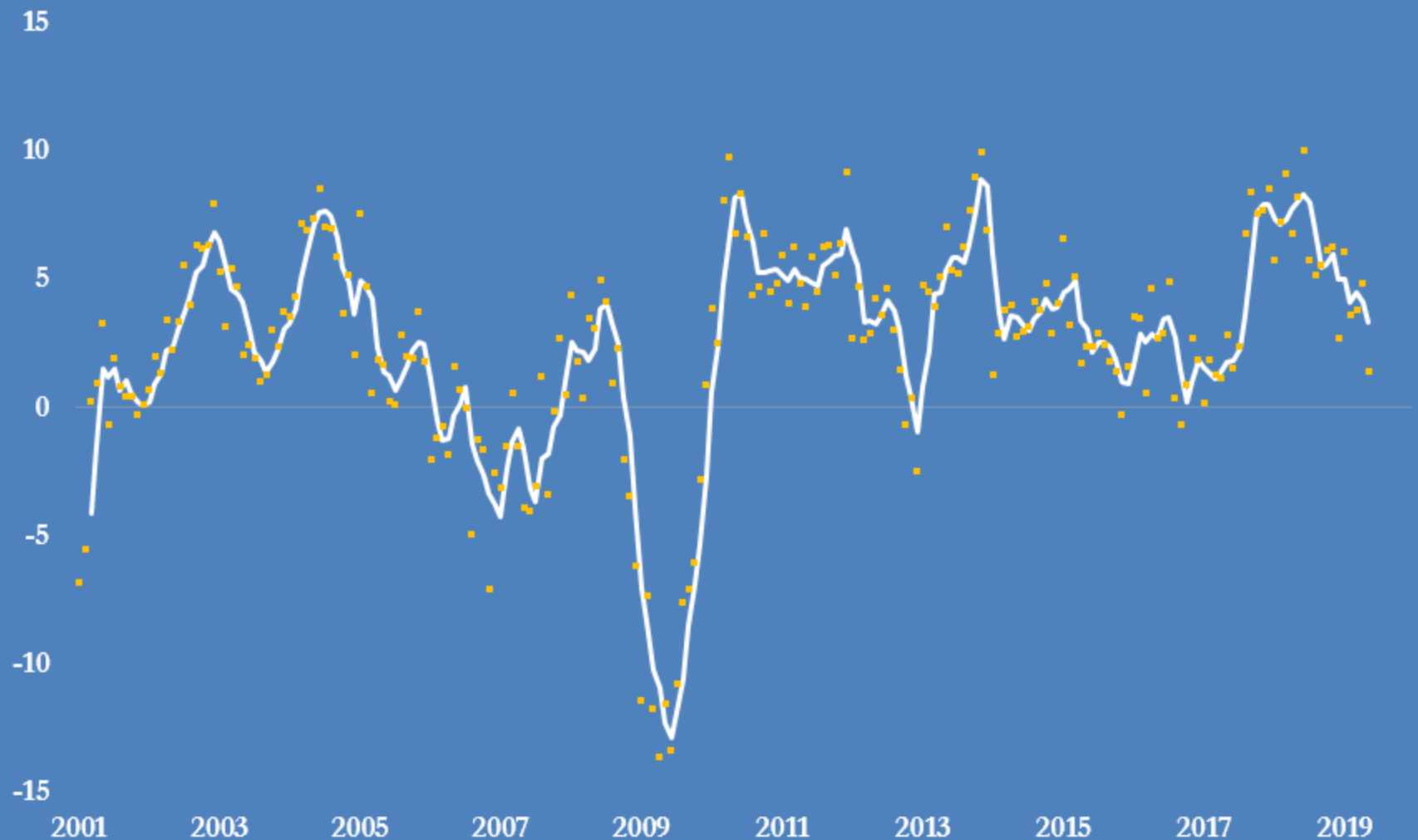


Source: U.S. Bureau of Transportation Statistics

@JKempEnergy

U.S. freight truck tonnage, 2001-2019

Percent change compared with prior year
Individual months and 3-month running average

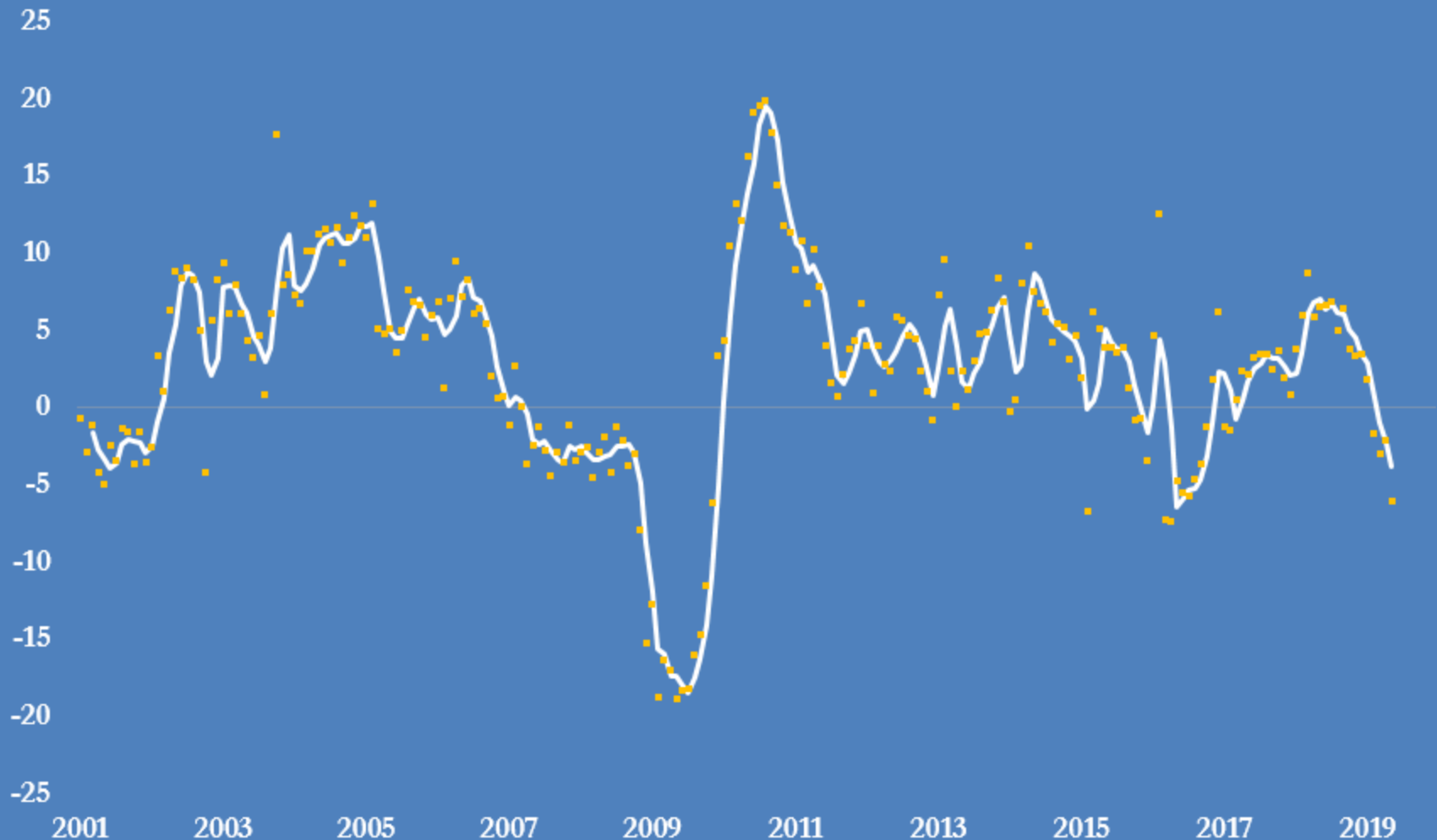


Source: American Trucking Associations via U.S. Bureau of Transportation Statistics

@JKempEnergy

U.S. intermodal rail freight, 2001-2019

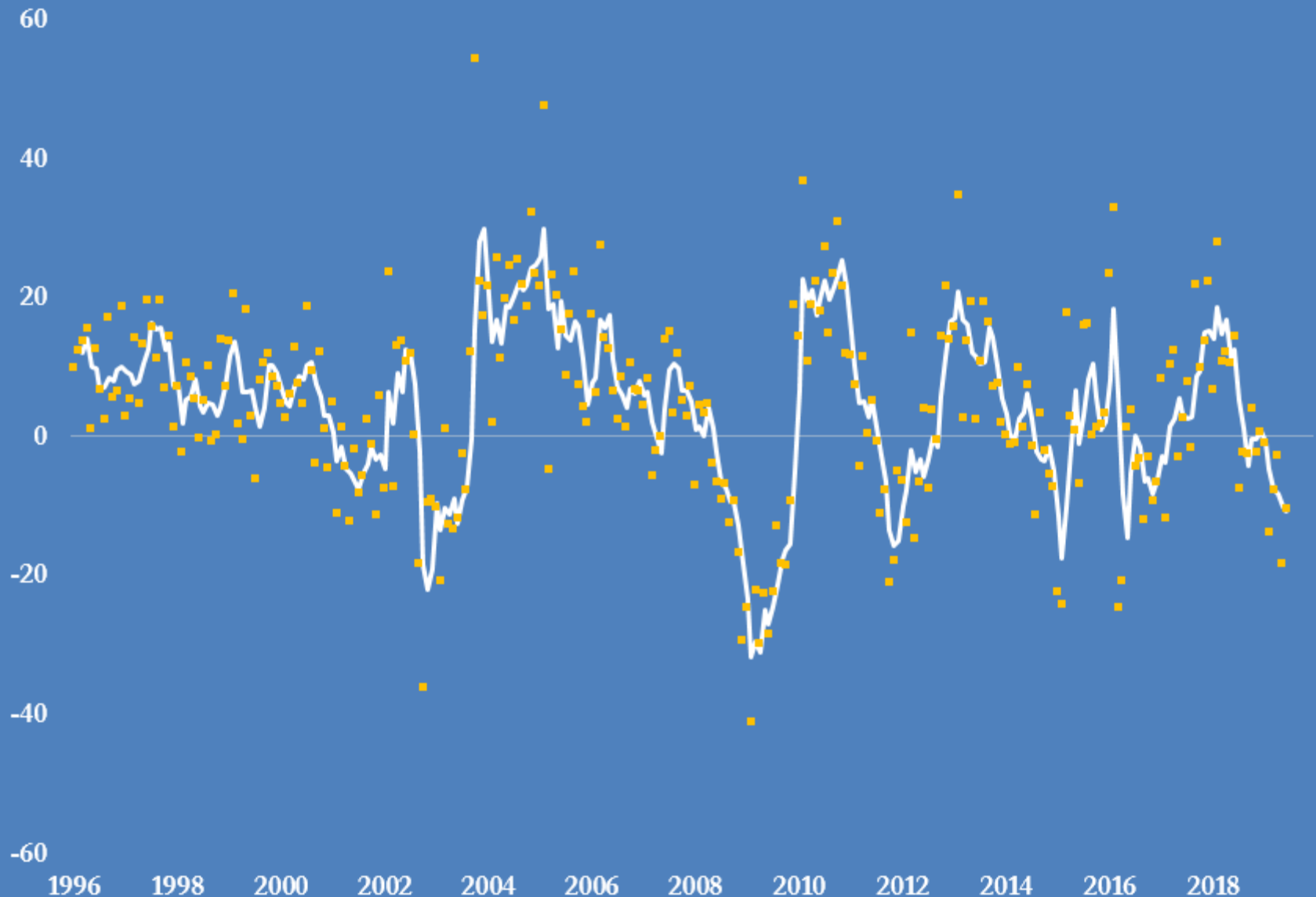
Percent change compared with prior year
Individual months and 3-month running average



Source: Association of American Railroads via U.S. Bureau of Transportation Statistics
@JKempEnergy

Port of Long Beach container throughput, 1996-2019

Percent change from previous year, monthly and 3-month average

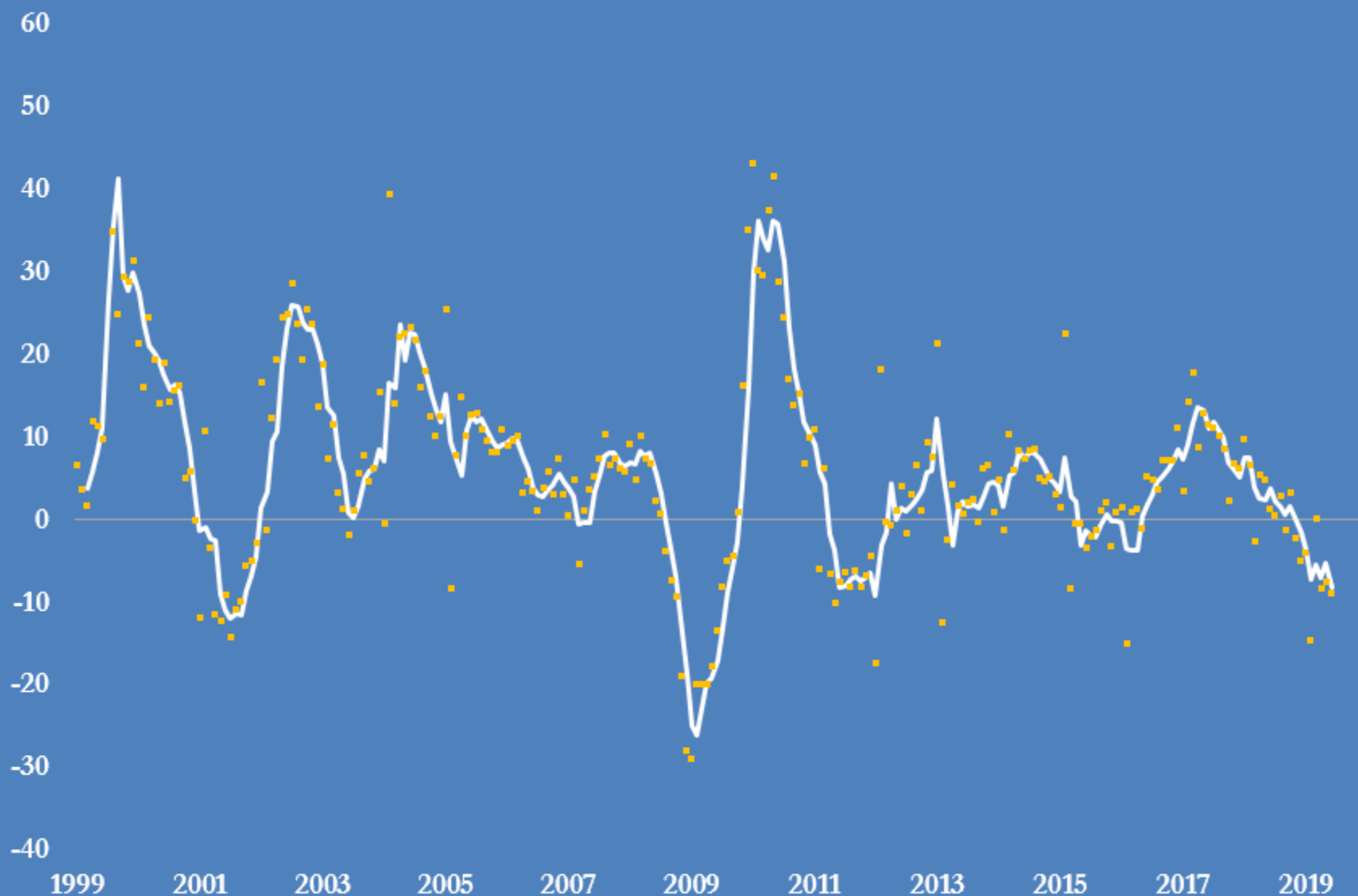


Source: Port of Long Beach

@JKempEnergy

Hong Kong air freight volume, 1999-2019

Percent change compared with prior year, monthly and 3-month average

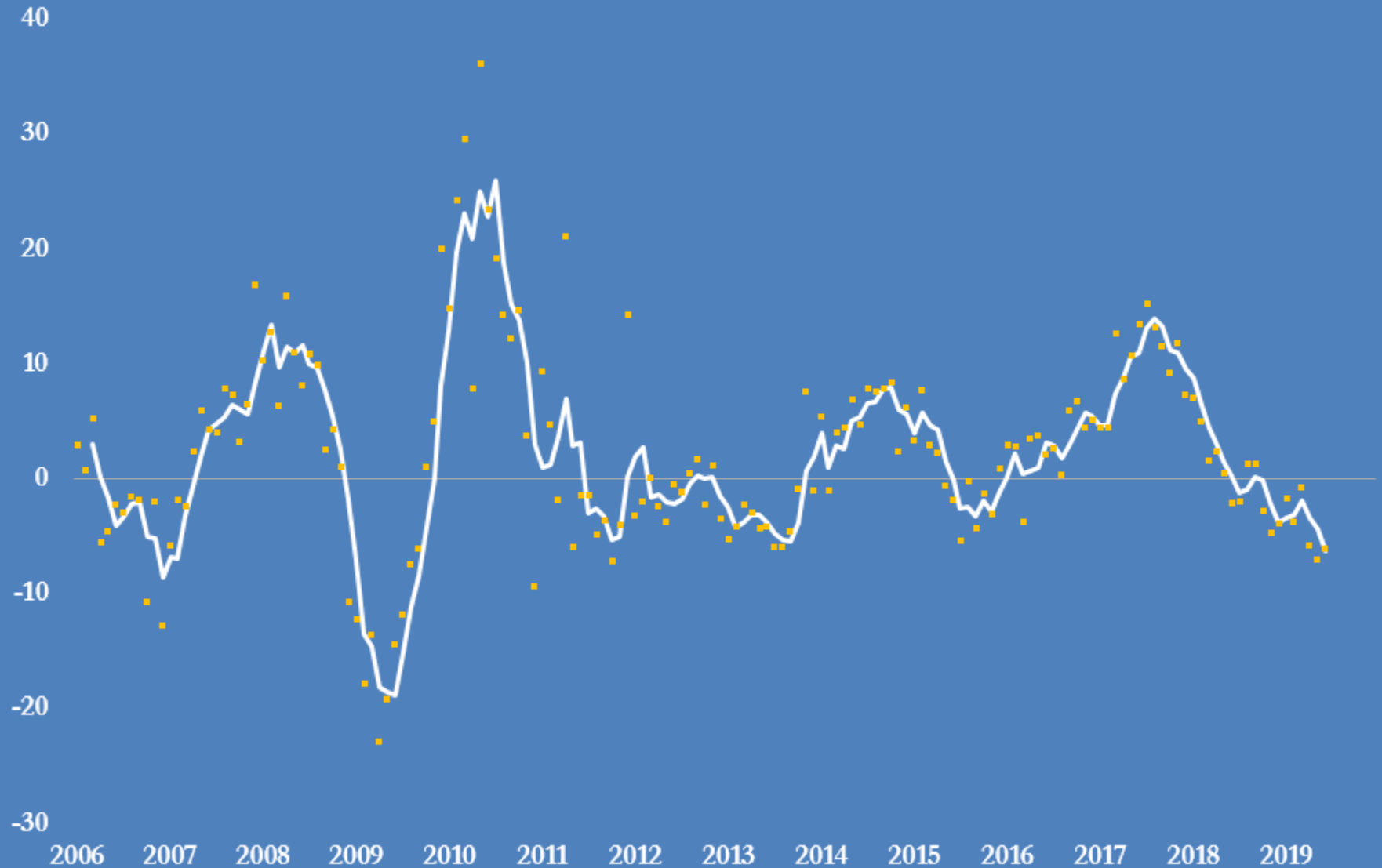


Source: Civil Aviation Department of Hong Kong Special Administrative Region

@JKempEnergy

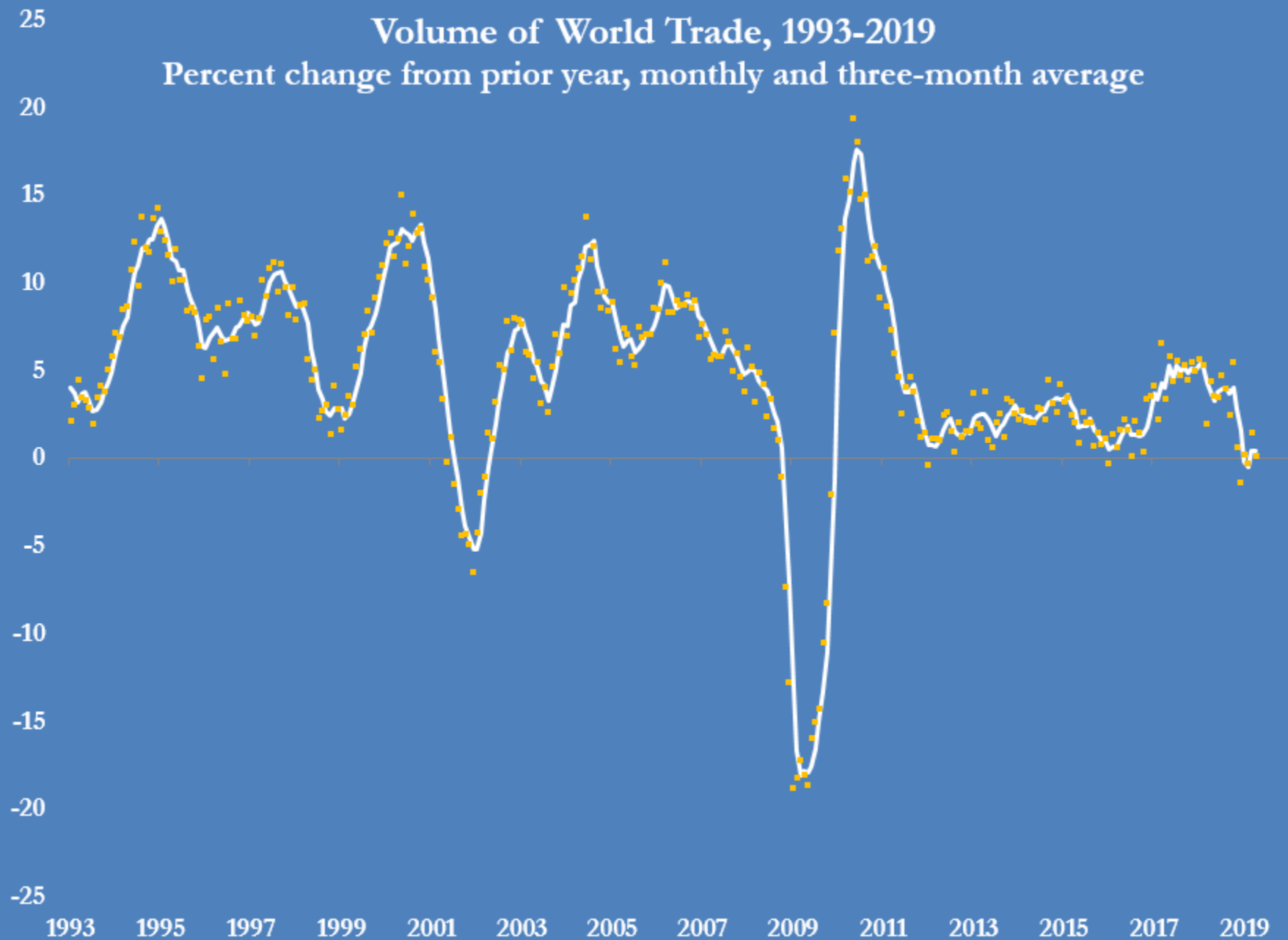
London Heathrow air freight volume, 2006-2019

percent change compared with prior year, monthly and 3-month average



Source: Heathrow Airport Limited

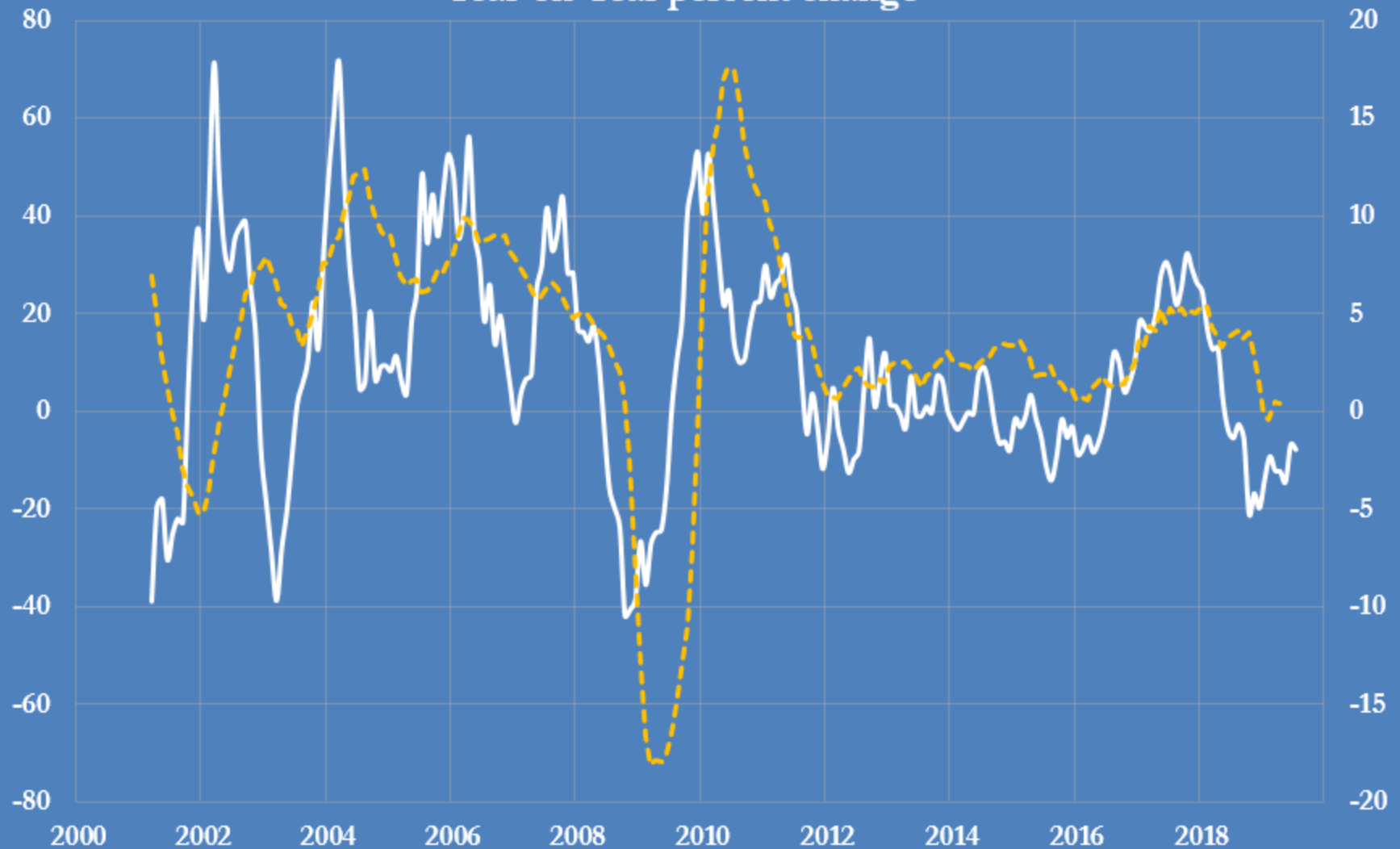
@JKempEnergy



Source: Netherlands Bureau for Economic Policy Analysis, *World Trade Monitor*

@JKempEnergy

South Korea's KOSPI 100 equity index and world trade Year-on-Year percent change

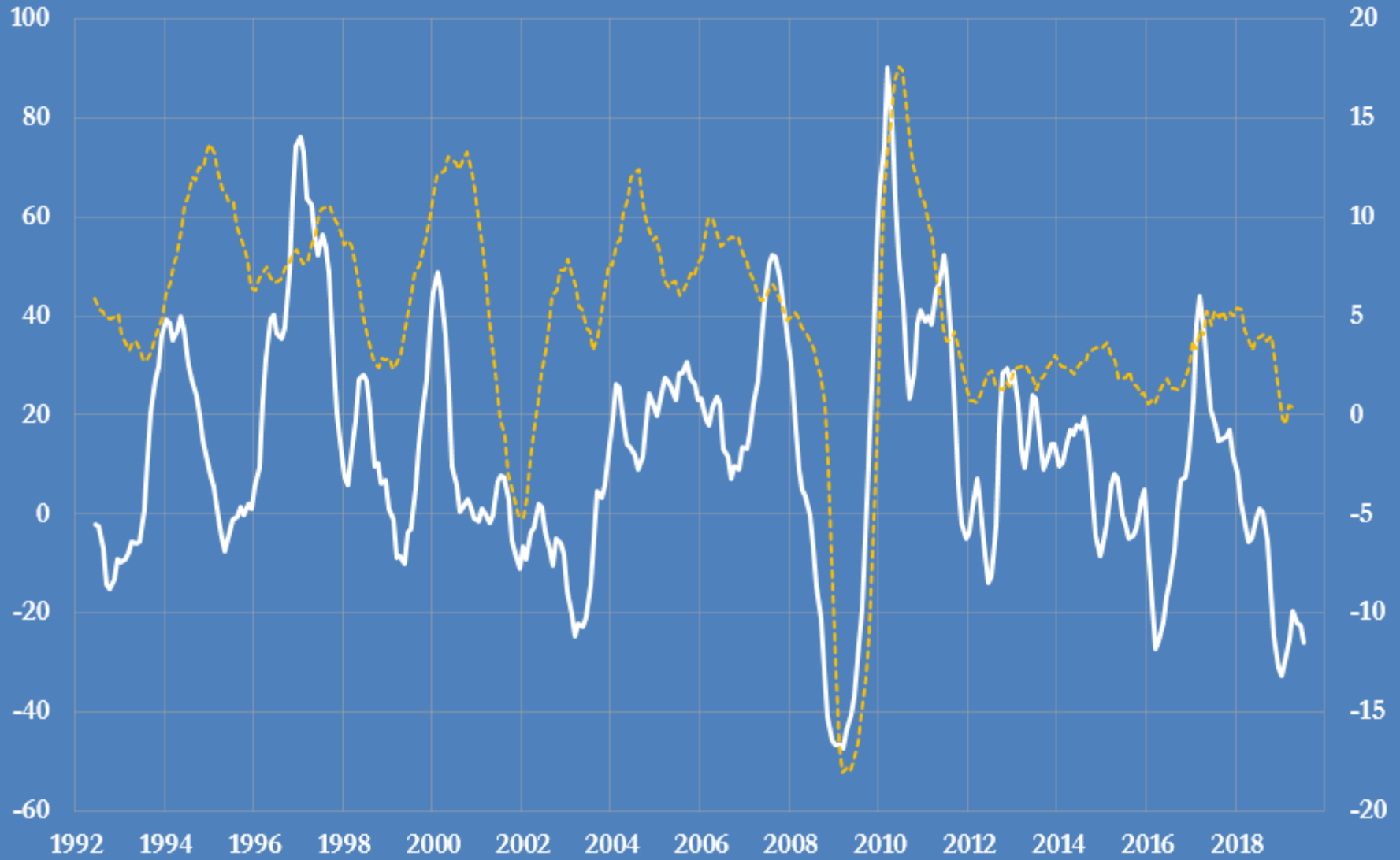


— KOSPI 100 share index (YoY percent change) (left-axis)
- - - World trade volumes (YoY percent change) (right-axis)

Source: CPB, Refinitiv Eikon
@JKempEnergy

BASF share price and world trade volumes, 1992-2019

Percent change from prior year, three-month average



— BASF share price (left-axis)
- - - World trade volume (right-axis)

Source: CPB, Deutsche Borse
@JKempEnergy