

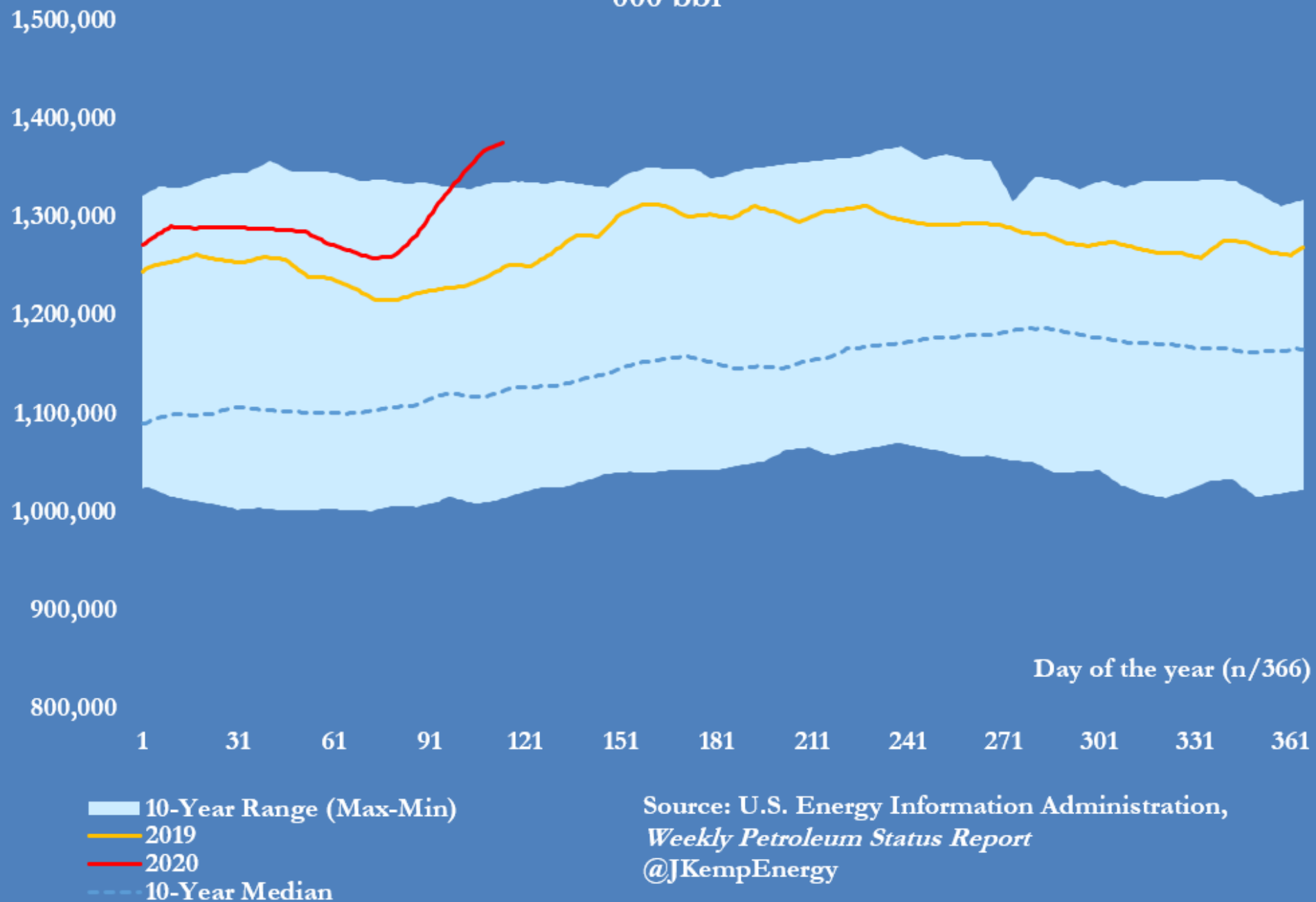
# U.S. oil production, consumption and inventories

## Selected indicators

JOHN KEMP  
REUTERS  
30 April 2020

# Total U.S. crude and petroleum product stocks excluding SPR

000 bbl

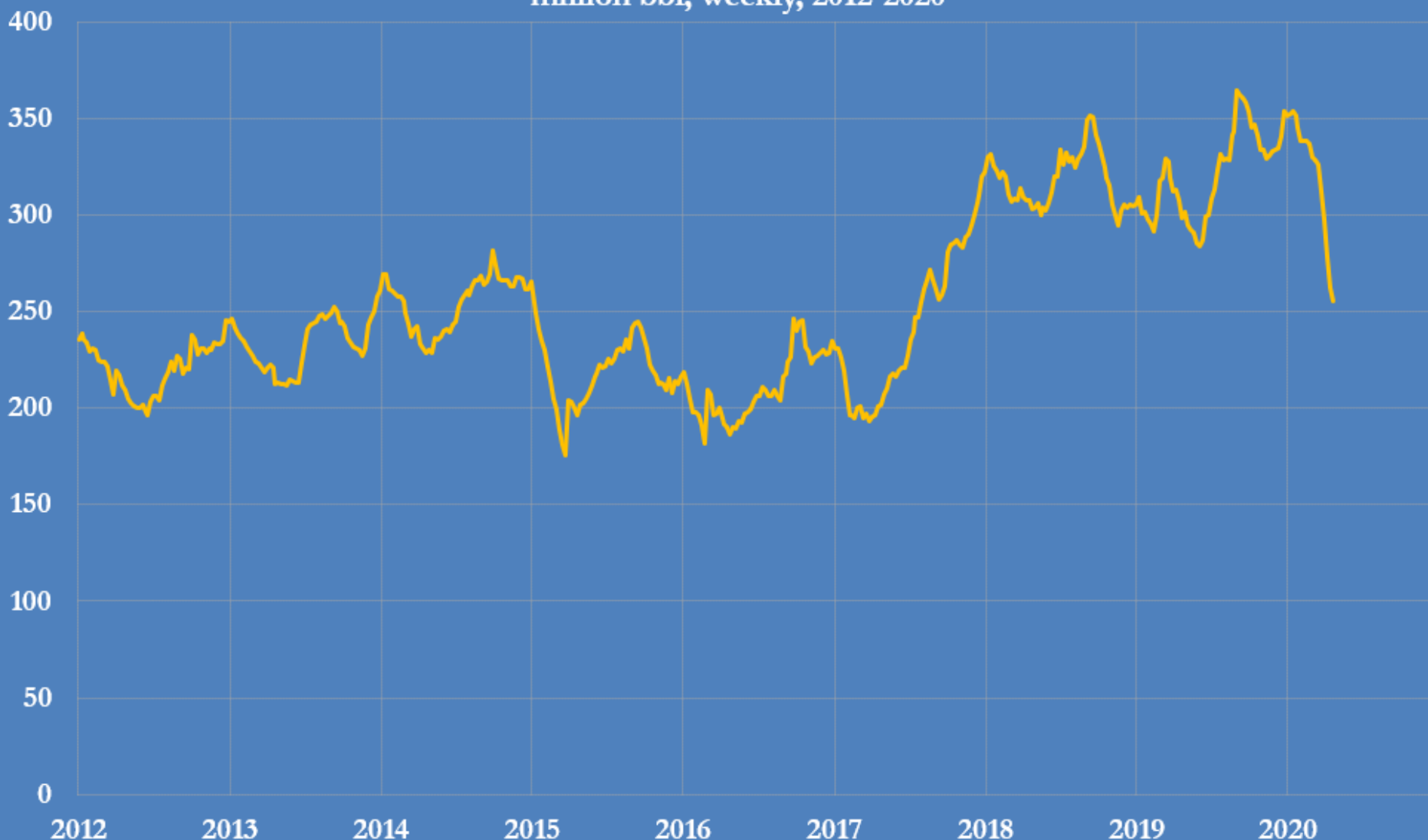


# U.S. commercial crude spare storage capacity

Total working storage capacity minus current stocks

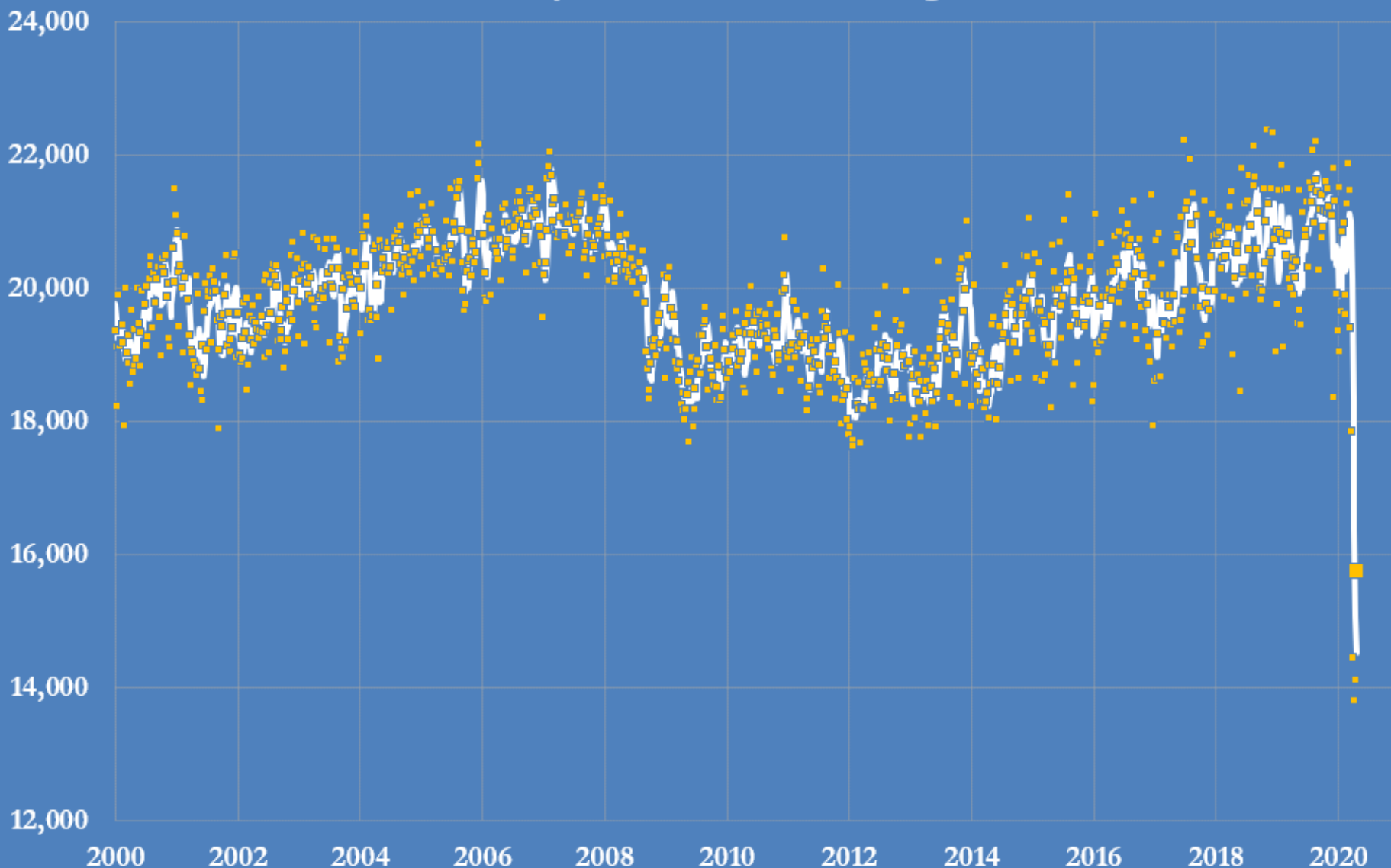
(excl pipeline fill and stocks in transit by pipeline, barge, rail and ship from Alaska)

million bbl, weekly, 2012-2020



# U.S. petroleum products supplied to the domestic market

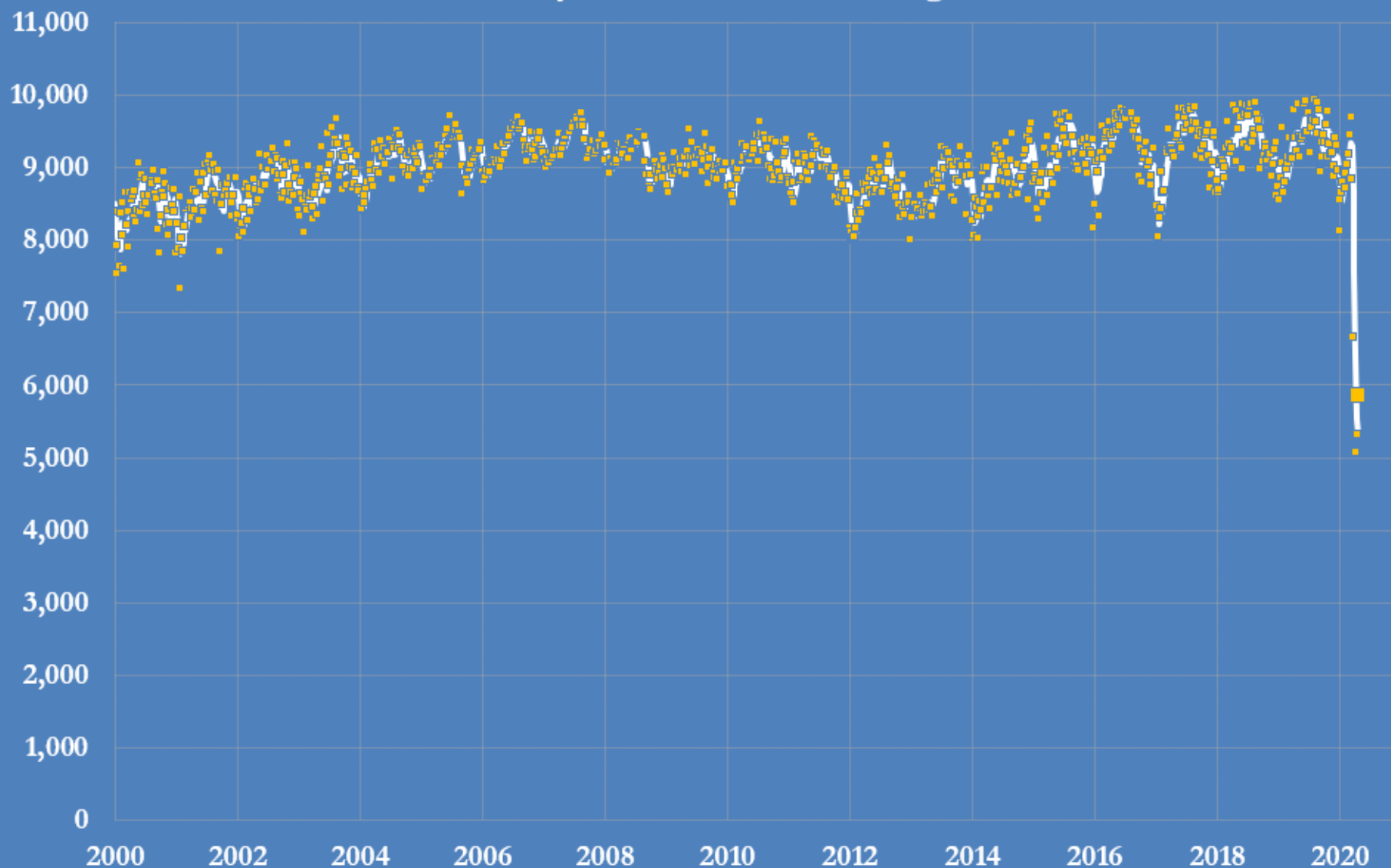
000 b/d, weekly and four-week average, 2000-2020



Source: EIA Weekly Petroleum Status Report

@JKempEnergy

# U.S. gasoline supplied to the domestic market 000 b/d, weekly and four-week average, 2000-2020

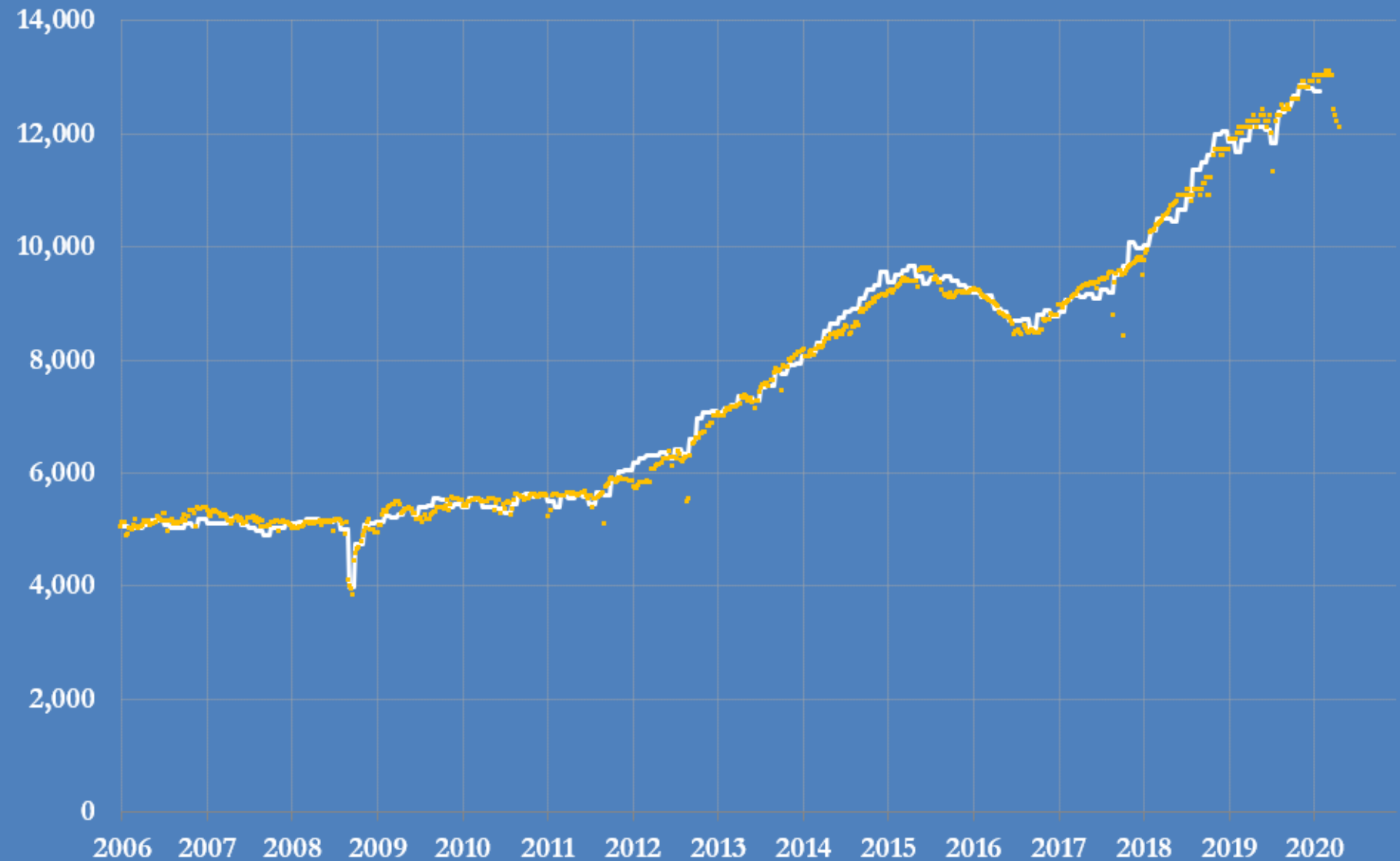


Source: EIA Weekly Petroleum Status Report

@JKempEnergy

# U.S. crude oil production (000 b/d)

## Weekly and monthly estimates

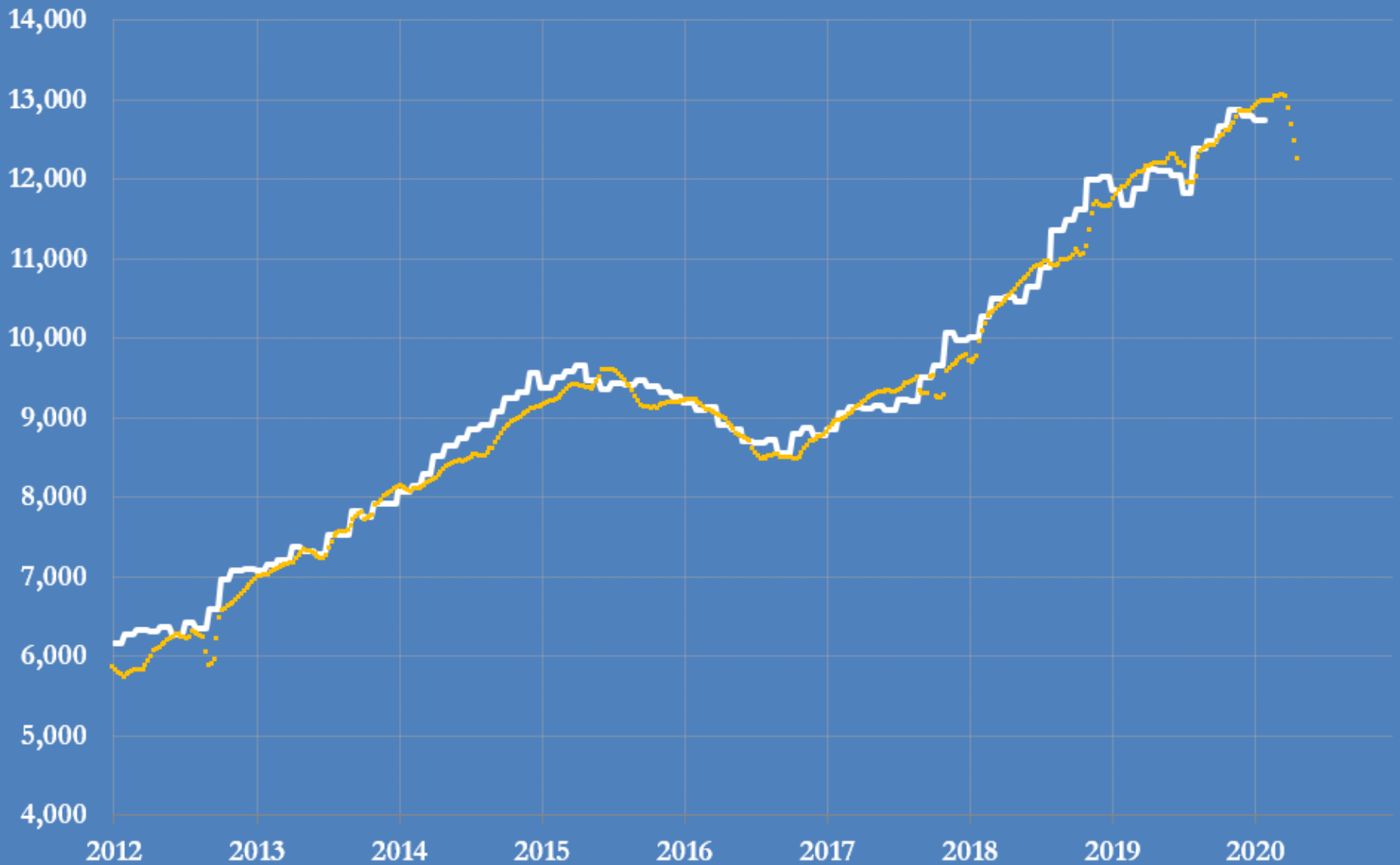


• Weekly estimates  
— Monthly estimates

Sources: EIA *Weekly Petroleum Status Report* and *Petroleum Supply Monthly*, @JKempEnergy

# U.S. crude oil production, 2012-2020

## Weekly estimates and monthly production, 000 b/d



• Weekly estimates (4-week average)  
— Actual monthly production

Sources: EIA *Weekly Petroleum Status Report* and  
*Petroleum Supply Monthly*, @JKempEnergy

Table B19. United States oil and gas well summary statistics, 2018

Prod. rate bracket (BOE/day)	Oil wells							Gas wells							Total wells			
	# of oil wells	% of oil wells	Annual oil prod. (MMbbl)	% of oil prod.	Oil rate per Well (bbl/day)	Annual gas prod. (Bcf)	Gas rate per well (Mcf/day)	# of gas wells	% of gas wells	Annual gas prod. (Bcf)	% of gas Prod.	Gas rate per well (Mcf/Day)	Annual oil prod. (MMbbl)	Oil rate per well (bbl/Day)	# of total wells	Annual oil prod. (MMbbl)	Annual gas prod. (Bcf)	Horizontal well count
0 - 1	167,481	38.4	17.6	0.5	0.3	6.1	0.1	168,531	30.8	124.5	0.4	2.2	0.9	0.0	336,012	18.5	130.5	2,925
1 - 2	50,054	11.5	22.9	0.7	1.4	8.8	0.5	62,040	11.4	179.2	0.6	8.3	1.3	0.1	112,094	24.2	188.0	1,881
2 - 4	50,564	11.6	45.1	1.3	2.6	24.1	1.4	67,869	12.4	389.4	1.3	16.5	3.3	0.1	118,433	48.5	413.6	3,506
4 - 6	27,745	6.4	41.5	1.2	4.4	28.4	3.0	42,140	7.7	408.8	1.4	28.0	3.9	0.3	69,885	45.4	437.2	3,349
6 - 8	17,964	4.1	37.4	1.1	6.1	29.3	4.8	28,945	5.3	389.1	1.3	39.1	4.2	0.4	46,909	41.6	418.5	3,189
8 - 10	12,701	2.9	34.0	1.0	7.9	28.3	6.6	21,018	3.9	363.5	1.3	50.3	4.1	0.6	33,719	38.1	391.8	3,000
<b>Subtotal &lt;=10</b>	<b>326,509</b>	<b>74.9</b>	<b>198.4</b>	<b>5.7</b>	<b>1.8</b>	<b>125.1</b>	<b>1.2</b>	<b>390,543</b>	<b>71.5</b>	<b>1,854.5</b>	<b>6.4</b>	<b>13.8</b>	<b>17.8</b>	<b>0.1</b>	<b>717,052</b>	<b>216.2</b>	<b>1,979.5</b>	<b>17,850</b>
10 - 12	10,045	2.3	32.6	0.9	9.6	28.0	8.3	16,384	3.0	344.6	1.2	61.4	4.1	0.7	26,429	36.6	372.6	3,122
12 - 15	11,355	2.6	44.7	1.3	11.7	40.7	10.6	18,755	3.4	481.5	1.7	75.2	5.6	0.9	30,110	50.4	522.2	4,541
<b>Subtotal &lt;=15</b>	<b>347,909</b>	<b>79.8</b>	<b>275.7</b>	<b>7.9</b>	<b>2.4</b>	<b>193.8</b>	<b>1.7</b>	<b>425,682</b>	<b>77.9</b>	<b>2,680.6</b>	<b>9.2</b>	<b>18.4</b>	<b>27.4</b>	<b>0.2</b>	<b>773,591</b>	<b>303.2</b>	<b>2,874.4</b>	<b>25,513</b>
15 - 20	13,086	3.0	65.7	1.9	14.9	63.4	14.4	21,617	4.0	712.7	2.5	96.7	8.8	1.2	34,703	74.5	776.1	7,602
20 - 25	9,033	2.1	57.2	1.6	18.9	63.0	20.8	14,310	2.6	604.9	2.1	124.4	7.8	1.6	23,343	65.0	667.8	7,218
25 - 30	6,839	1.6	52.6	1.5	22.9	61.3	26.7	10,452	1.9	539.3	1.9	151.2	7.8	2.2	17,291	60.4	600.6	6,974
30 - 40	9,913	2.3	95.8	2.7	28.6	123.4	36.8	14,820	2.7	961.2	3.3	190.6	14.5	2.9	24,733	110.3	1,084.6	12,241
40 - 50	6,853	1.6	84.4	2.4	36.2	118.8	51.0	9,843	1.8	821.8	2.8	243.7	13.9	4.1	16,696	98.4	940.6	9,779
50 - 100	15,935	3.7	302.3	8.6	55.3	478.4	87.5	22,149	4.1	2,819.6	9.7	374.5	53.6	7.1	38,084	355.9	3,298.0	26,219
<b>Subtotal &lt;=100</b>	<b>409,568</b>	<b>94.0</b>	<b>933.8</b>	<b>26.7</b>	<b>6.9</b>	<b>1,102.1</b>	<b>8.1</b>	<b>518,873</b>	<b>95.0</b>	<b>9,140.1</b>	<b>31.4</b>	<b>51.4</b>	<b>133.9</b>	<b>0.8</b>	<b>928,441</b>	<b>1,067.7</b>	<b>10,242.1</b>	<b>95,546</b>
100 - 200	8,929	2.1	321.0	9.2	108.7	542.7	183.7	11,906	2.2	2,921.4	10.0	743.6	61.9	15.8	20,835	383.0	3,464.1	15,595
200 - 400	7,409	1.7	477.0	13.6	217.8	901.4	411.6	7,413	1.4	3,640.9	12.5	1,494.1	73.7	30.2	14,822	550.7	4,542.3	12,471
400 - 800	6,508	1.5	701.3	20.0	426.0	1,332.9	809.7	4,187	0.8	3,856.1	13.2	2,947.6	87.4	66.8	10,695	788.7	5,189.1	9,627
800 - 1,600	2,899	0.7	464.3	13.3	782.0	912.5	1,536.8	2,431	0.4	4,077.4	14.0	6,044.7	65.9	97.8	5,330	530.3	4,989.9	4,913
1,600 - 3,200	387	0.1	117.9	3.4	1,619.1	207.6	2,851.0	1,327	0.2	3,855.3	13.2	12,620.4	20.7	67.7	1,714	138.6	4,062.9	1,562
3,200 - 6,400	109	0.0	134.7	3.9	3,916.8	146.3	4,254.2	255	0.1	1,172.1	4.0	23,918.0	4.1	82.9	364	138.8	1,318.4	236
6,400 - 12,800	97	0.0	243.1	6.9	7,776.1	235.7	7,539.2	47	0.0	417.4	1.4	48,987.5	6.0	701.8	144	249.0	653.1	26
> 12,800	23	0.0	107.7	3.1	15,735.4	75.3	10,992.3	3	0.0	54.6	0.2	71,804.4	2.0	2,662.1	26	109.8	129.9	1
<b>Total</b>	<b>435,929</b>	<b>100.0</b>	<b>3,500.9</b>	<b>100.0</b>	<b>24.4</b>	<b>5,456.4</b>	<b>38.0</b>	<b>546,442</b>	<b>100.0</b>	<b>29,135.4</b>	<b>100.0</b>	<b>156.3</b>	<b>455.5</b>	<b>2.4</b>	<b>982,371</b>	<b>3,956.4</b>	<b>34,591.9</b>	<b>139,977</b>

Notes:

1) Source: State administrative oil &amp; gas data thru Enverus Drillinginfo.

2) The total volumes shown in the distribution tables may not exactly agree with other related data, including other EIA sources. Major reasons for differences include: the timing of updates from state and commercial sources, the summed production of available well-level production data versus state-level aggregations of production, and how a well is defined and which entities are counted and summed.

3) Wells counted for this report include sidetracks, completions, re-completions and leases, this includes all oil and/or gas producing 'entities' available in Enverus Drillinginfo database.